

BK 94 Pg 11429

CP&F INST.  
NO. 97062081  
18 - 17

**LEGEND**

———— **BOUNDARY LINE**

✚ FOUND ALUMINUM CAP MONUMENT

✚ SET 3" ALUMINUM CAP MONUMENT TO REPLACE MONUMENT DESTROYED DURING CONSTRUCTION

✚ FOUND BRASS CAP MONUMENT

◎ FOUND 5/8" IRON PIN AS NOTED

○ FOUND 5/8" IRON PIN PLS 8022

◎ SET 5/8"x30' IRON PIN PLS 8022

○ SET 1/2"x24' IRON PIN PLS 8022

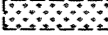
WC◎ SET 5/8"x30' IRON PIN PLS 8022 (WITNESS CORNER)

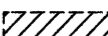
RM● SET 5/8"x30' IRON PIN W/ ALUMINUM CAP PLS 8022 (REFERENCE MONUMENT)

□ CALCULATED POSITION — NOTHING SET

(100.00') RECORD DATA

----- **EASEMENT LINE**

 EXISTING WETLANDS CONSERVATION EASEMENT PER INSTRUMENT NO. 105137703

 ACHD DRAINAGE EASEMENT

$\frac{8'}{HOA}$  HOME OWNERS ASSOCIATION ACCESS EASEMENT.

$\frac{6'}{ACHD}$  ACHD DRAINAGE EASEMENT W/WIDTH

$\frac{6'}{IRR}$  HOA IRRIGATION AND AMENITY EASEMENT W/WIDTH

$\frac{6'}{SD}$  ACHD STORMDRAIN EASEMENT W/ WIDTH

$\frac{6'}{FP}$  HOA FLOODPLAIN CONNECTIVITY EASEMENT W/WIDTH

$\frac{25'}{GB}$  EXISTING GREENBELT EASEMENT PER INSTRUMENT NOS. 105088975 & 105088976

IDL EXISTING STATE OF IDAHO CONSERVATION EASEMENT INSTRUMENT NOS. 105129520 & 105129521

$\frac{5.5'}{SW}$  EXISTING ACHD SIDEWALK EASEMENT PER INSTRUMENT NO. 105117240

① BLOCK NUMBER      ⑤ LOT NUMBER

— . . — FEMA REGULATORY FLOODWAY (EFFECTIVE 2-19-03)

— . . — 50' SETBACK FROM FEMA REGULATORY FLOODWAY

----- FLOODWAY BUILDING ENVELOPE (LOTS 10 & 11  
BLOCK 1 ONLY)

COMMON LOTS		COMMON LOTS	
BLOCK	LOT	BLOCK	LOT
1	2	8	1
1	3	9	1
1	16	10	1
2	12	11	1
3	1	12	1
4	1	13	1
4	6	14	1
4	8	15	1
4	18	16	1
5	1	17	1
6	1	18	1
7	1	19	1

**BUILDING AND OCCUPANCY IN THIS SUBDIVISION SHALL CONFORM TO THE STANDARDS ESTABLISHED BY THE RESTRICTIVE COVENANTS AS ESTABLISHED BY THE DEVELOPER AND AS MODIFIED BY THE SHORES HOMEOWNER'S ASSOCIATION.**

SEE NOTES ON SHEET 8.

PROFESSIONAL LAND SURVEYOR  
REGISTERED  
8022  
1-11-06  
STATE OF IDAHO  
DELSON D. BROKAN

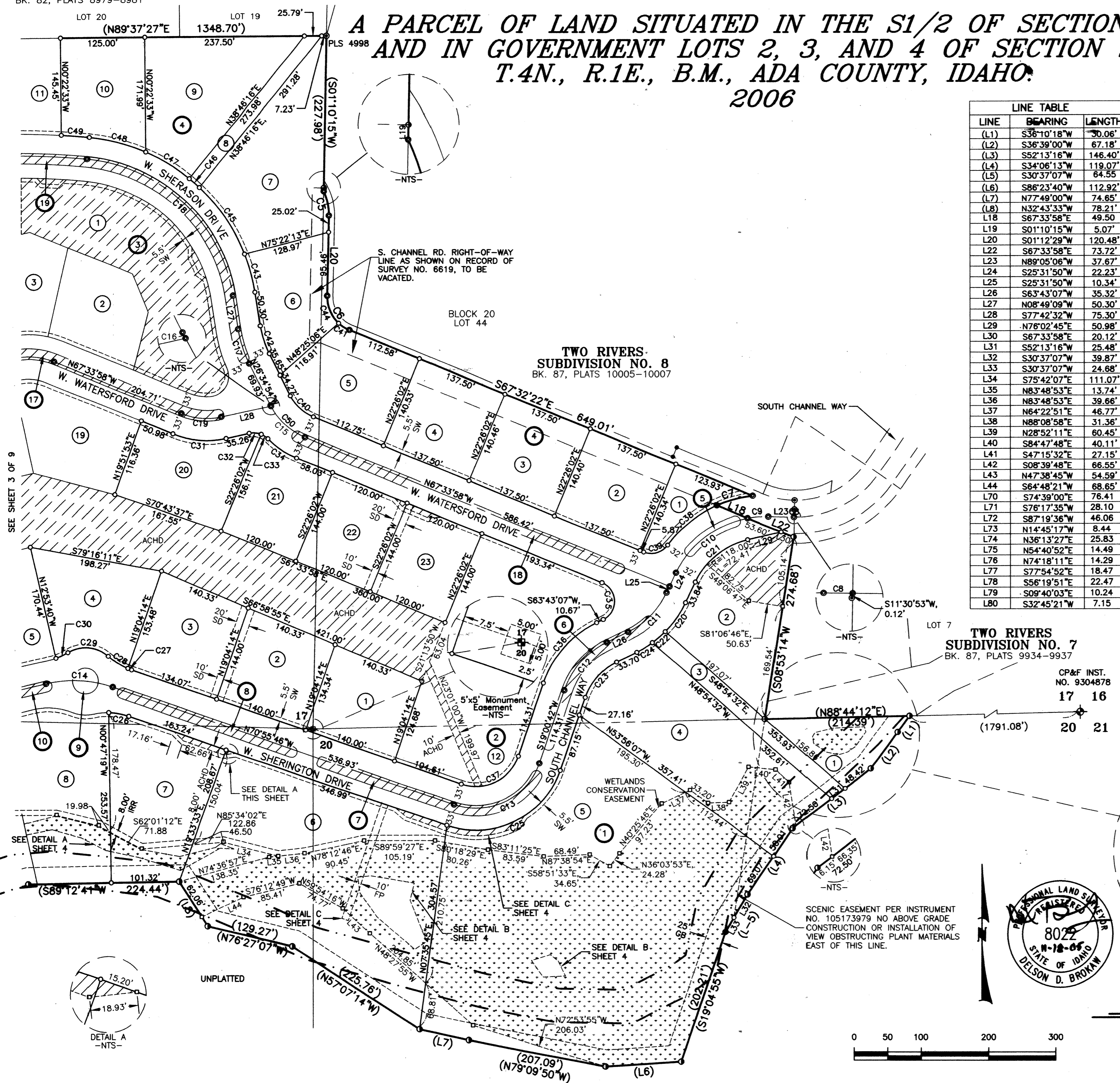
9777 CHINDEN BOULEVARD  
BOISE, IDAHO 83714  
(208) 323-2288

***SHEET NO. 1 OF 9***

TWO RIVERS  
SUBDIVISION NO. 3  
BK. 82, PLATS 8979-8981

# THE SHORES SUBDIVISION - PHASE 1

A PARCEL OF LAND SITUATED IN THE S1/2 OF SECTION 17,  
AND IN GOVERNMENT LOTS 2, 3, AND 4 OF SECTION 20,  
T.4N., R.1E., B.M., ADA COUNTY, IDAHO.  
2006



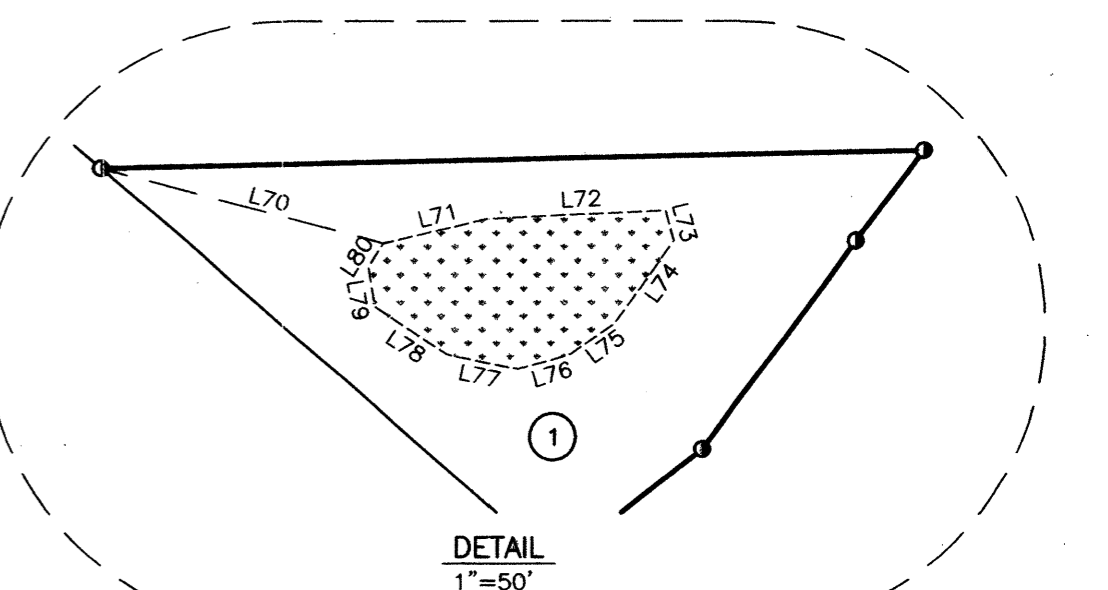
LINE TABLE		
LINE	BEARING	LENGTH
L1	S36°10'18\"W	30.06'
L2	S36°39'00\"W	67.18'
L3	S52°13'16\"W	146.40'
L4	S34°06'13\"W	119.07'
L5	S30°37'07\"W	64.55'
L6	S86°23'40\"W	112.92'
L7	N77°49'00\"W	74.65'
L8	S32°43'33\"W	78.21'
L18	S67°33'58\"E	49.50'
L19	S01°10'15\"W	5.07'
L20	S01°12'29\"W	120.48'
L22	S67°33'58\"E	73.72'
L23	N89°05'06\"W	37.67'
L24	S25°31'50\"W	22.23'
L25	S25°31'50\"W	10.34'
L26	S63°43'07\"W	35.32'
L27	N08°49'09\"W	50.30'
L28	S77°42'32\"W	75.30'
L29	N76°02'45\"E	50.98'
L30	S67°33'58\"E	20.12'
L31	S52°13'16\"W	25.48'
L32	S30°37'07\"W	39.87'
L33	S30°37'07\"W	24.68'
L34	S75°42'07\"E	111.07'
L35	N83°48'53\"E	13.74'
L36	N83°48'53\"E	39.66'
L37	N64°22'51\"E	46.77'
L38	N88°08'58\"E	31.36'
L39	N28°52'11\"E	60.45'
L40	S84°47'48\"E	40.11'
L41	S47°15'32\"E	27.15'
L42	S08°39'48\"E	66.55'
L43	N47°38'45\"W	54.59'
L44	S64°48'21\"W	68.65'
L70	S74°39'00\"E	76.41'
L71	S76°17'35\"W	28.10'
L72	S87°19'36\"W	46.06'
L73	N14°45'17\"W	8.44'
L74	N36°13'27\"E	25.83'
L75	N54°40'52\"E	14.49'
L76	N74°18'11\"E	14.29'
L77	S77°54'52\"E	18.47'
L78	S56°19'51\"E	22.47'
L79	S09°40'03\"E	10.24'
L80	S32°45'21\"W	7.15'

CURVE TABLE					
CURVE	RADIUS	LENGTH	TANGENT	DELTA	BEARING
C5	86.50'	38.46'	19.55'	25°28'26\"	S11°32'37\"E
C6	53.50'	64.27'	36.65'	68°49'40\"	S33°07'32\"E
C7	182.00'	55.66'	28.05'	17°31'23\"	S74°40'34\"W
C8	150.00'	0.72'	0.36'	00°16'36\"	N89°13'24\"W
C9	150.00'	31.09'	15.60'	11°52'31\"	S84°58'39\"W
C10	150.00'	140.09'	75.62'	53°30'33\"	S52°17'06\"W
C11	125.00'	83.31'	43.27'	38°11'17\"	S44°37'28\"W
C12	125.00'	97.54'	51.40'	44°42'25\"	S41°21'55\"W
C13	100.00'	157.18'	100.10'	90°03'32\"	S64°02'28\"W
C14	180.00'	100.42'	51.55'	31°57'54\"	N86°54'43\"W
C15	100.00'	70.29'	36.67'	40°16'30\"	N47°25'43\"W
C16	100.00'	1.24'	0.62'	00°42'33\"	N26°56'11\"W
C17	175.00'	54.25'	27.35'	17°45'45\"	N17°42'02\"W
C18	245.00'	321.90'	188.95'	75°16'47\"	N46°27'32\"W
C19	100.00'	60.61'	31.27'	34°43'30\"	N84°55'43\"W
C20	158.00'	52.87'	26.69'	19°10'25\"	N35°07'02\"E
C21	118.00'	104.04'	55.67'	50°30'55\"	N50°47'17\"E
C22	158.00'	25.29'	12.67'	09°10'09\"	N49°17'19\"E
C23	92.00'	71.79'	37.83'	44°42'25\"	N41°21'55\"E
C24	158.00'	27.15'	13.61'	09°50'43\"	N58°47'45\"E
C25	133.00'	209.05'	133.14'	90°03'32\"	N64°02'28\"E
C26	100.00'	30.44'	15.34'	17°26'37\"	S79°39'05\"E
C27	100.00'	5.94'	2.97'	03°24'02\"	N69°13'45\"W
C28	100.00'	34.75'	17.55'	19°54'33\"	N57°34'27\"W
C29	50.00'	64.24'	37.41'	73°36'43\"	N84°25'32\"W
C30	100.00'	19.78'	9.92'	11°19'51\"	S64°26'01\"W
C31	133.00'	80.61'	41.58'	34°43'30\"	S84°55'43\"E
C32	30.00'	17.88'	9.21'	34°08'59\"	S85°12'58\"E
C33	30.00'	11.94'	6.05'	22°48'22\"	S56°44'18\"E
C34	133.00'	51.60'	26.13'	22°13'51\"	S56°27'02\"E
C35	30.00'	68.74'	66.26'	131°17'05\"	S01°55'25\"E
C36	158.00'	123.28'	64.97'	44°42'25\"	S41°21'55\"W
C37	67.00'	105.31'	67.07'	90°03'33\"	S64°02'28\"W
C38	182.00'	95.75'	49.01'	30°08'33\"	S50°50'36\"W
C39	30.00'	40.14'	23.72'	76°39'43\"	S74°06'11\"W
C40	67.00'	47.93'	25.04'	40°59'04\"	N47°04'26\"W
C41	53.50'	19.17'	9.69'	20°31'54\"	S57°16'25\"E
C42	142.00'	44.02'	22.19'	17°45'45\"	N17°42'02\"W
C43	278.00'	59.55'	29.89'	12°16'24\"	N14°57'21\"W
C44	53.50'	45.10'	23.99'	48°17'54\"	S22°51'31\"E
C45	278.00'	122.14'	62.07'	25°10'21\"	N33°40'43\"W
C46	278.00'	20.03'	10.02'	04°07'41\"	N48°19'44\"W
C47	278.00'	76.42'	38.45'	15°45'02\"	N58°16'06\"W
C48	278.00'	87.12'	43.92'	17°57'19\"	N75°07'16\"W
C49	1048.00'	41.46'	20.73'	02°16'00\"	N85°13'56\"W
C50	100.00'	71.53'	37.37'	40°59'04\"	N47°04'26\"W

TWO RIVERS  
SUBDIVISION NO. 7  
BK. 87, PLATS 9934-9937

CP&F INST.  
NO. 9304878  
17 16  
20 21  
(1791.08')

SCENIC EASEMENT PER INSTRUMENT  
NO. 105173979 NO ABOVE GRADE  
CONSTRUCTION OR INSTALLATION OF  
VIEW OBSTRUCTING PLANT MATERIALS  
EAST OF THIS LINE.



TOOTHMAN-ORTON ENGINEERING COMPANY

9777 CHINDEN BOULEVARD  
BOISE, IDAHO 83714  
(208) 323-2288

# THE SHORES SUBDIVISION - PHASE 1

A PARCEL OF LAND SITUATED IN THE S1/2 OF SECTION 17,  
AND IN GOVERNMENT LOTS 2, 3, AND 4 OF SECTION 20,  
T.4N., R.1E., B.M., ADA COUNTY, IDAHO.

2006

TWO RIVERS  
SUBDIVISION NO. 3  
BK. 82, PLATS 8979-8981

LOT 21

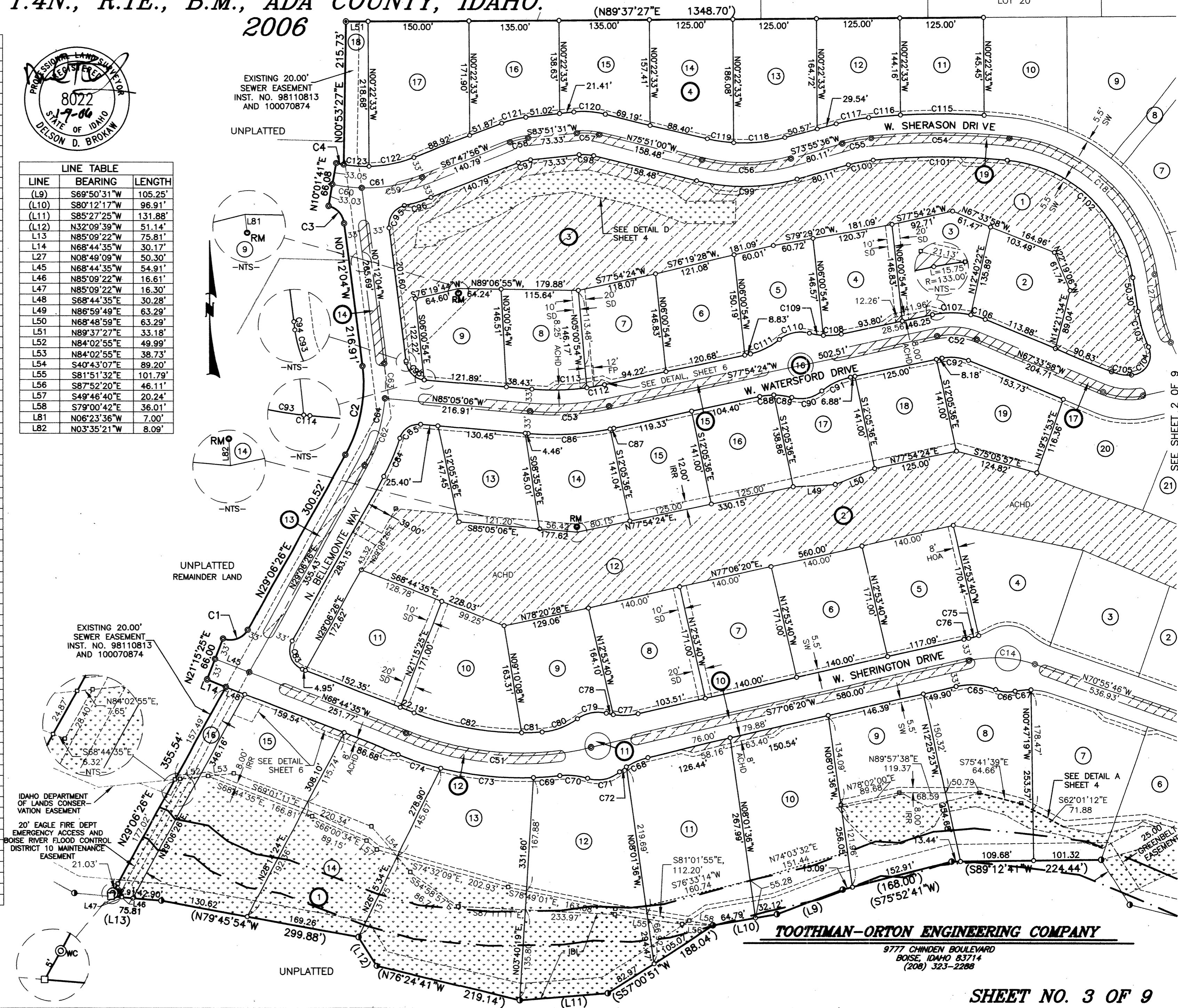
LOT 20

LOT 19

CURVE TABLE					
CURVE	RADIUS	LENGTH	TANGENT	DELTA	CHORD
C1	30.00'	43.01'	26.15'	82°08'59"	39.42'
C2	217.00'	137.51'	71.15'	36°18'30"	135.22'
C3	30.00'	36.83'	21.14'	70°20'30"	34.56'
C4	192.00'	11.60'	5.80'	03°27'41"	11.60'
C14	180.00'	100.42'	51.55'	31°57'54"	99.12'
C18	245.00'	321.90'	188.95'	75°16'47"	299.24'
C51	471.00'	280.74'	144.68'	34°09'05"	276.60'
C52	100.00'	60.26'	31.08'	34°31'38"	59.35'
C53	400.00'	118.74'	59.81'	17°00'30"	118.30'
C54	1015.00'	207.64'	104.18'	11°43'16"	207.28'
C55	245.00'	43.84'	21.98'	10°15'12"	43.79'
C56	255.00'	134.51'	68.86'	30°13'24"	132.96'
C57	95.00'	33.64'	17.00'	20°17'29"	33.47'
C58	100.00'	28.03'	14.11'	16°03'35"	27.94'
C59	225.00'	92.92'	47.13'	23°39'43"	92.26'
C60	225.00'	44.58'	22.36'	11°21'10"	44.51'
C61	225.00'	137.50'	70.97'	35°00'54"	135.37'
C62	250.00'	105.56'	53.58'	24°11'32"	104.78'
C63	250.00'	52.87'	26.53'	12°06'58"	52.77'
C64	250.00'	158.43'	81.97'	36°18'30"	155.79'
C65	100.00'	60.43'	31.17'	34°37'29"	59.52'
C66	50.00'	29.59'	15.24'	33°54'18"	29.16'
C67	100.00'	24.09'	12.10'	13°48'06"	24.03'
C68	100.00'	35.42'	17.90'	20°17'46"	35.24'
C69	504.00'	39.65'	19.84'	04°30'29"	39.64'
C70	100.00'	42.11'	21.37'	24°07'28"	41.79'
C71	50.00'	50.55'	27.67'	57°55'25"	48.42'
C72	100.00'	12.65'	6.33'	07°14'48"	12.64'
C73	504.00'	139.22'	70.05'	15°49'35"	138.77'
C74	504.00'	66.51'	33.30'	07°33'38"	66.46'
C75	100.00'	15.65'	7.84'	08°58'01"	15.63'
C76	213.00'	7.29'	3.64'	01°57'38"	7.29'
C77	100.00'	37.35'	18.90'	21°24'06"	37.14'
C78	100.00'	10.72'	5.36'	06°08'27"	10.71'
C79	50.00'	45.08'	24.20'	57°39'31"	43.57'
C80	100.00'	57.31'	29.47'	32°50'14"	56.53'
C81	438.00'	30.86'	15.44'	04°02'14"	30.86'
C82	438.00'	163.54'	82.73'	21°23'34"	162.59'
C83	30.00'	51.23'	34.42'	97°51'01"	45.23'
C84	283.00'	62.14'	31.19'	12°34'50"	62.01'
C85	30.00'	41.04'	24.46'	78°23'18"	37.92'
C86	433.00'	122.86'	61.85'	16°15'27"	122.45'
C87	433.00'	5.67'	2.84'	00°45'03"	5.67'
C88	100.00'	20.75'	10.41'	11°53'13"	20.71'
C89	100.00'	27.32'	13.75'	15°39'21"	27.24'
C90	50.00'	48.07'	26.08'	55°05'08"	46.24'
C91	100.00'	48.07'	24.51'	27°32'33"	47.61'
C92	67.00'	40.38'	20.82'	34°31'38"	39.77'
C93	30.00'	40.58'	24.08'	77°30'04"	37.56'
C94	283.00'	2.49'	1.25'	00°30'16"	2.49'
C95	30.00'	44.09'	27.11'	84°11'53"	40.22'
C96	258.00'	41.42'	20.75'	09°11'53"	41.37'
C97	67.00'	18.78'	9.45'	16°03'35"	18.72'
C98	62.00'	21.96'	11.09'	20°17'29"	21.84'
C99	288.00'	151.92'	77.77'	30°13'24"	150.16'
C100	212.00'	37.94'	19.02'	10°15'12"	37.89'
C101	982.00'	200.89'	100.80'	11°43'16"	200.54'
C102	212.00'	278.54'	163.50'	75°16'47"	258.93'
C103	208.00'	55.49'	27.91'	15°17'07"	55.32'
C104	30.00'	57.91'	43.32'	110°35'32"	49.33'
C105	67.00'	30.34'	15.43'	25°56'46"	30.08'
C106	133.00'	22.66'	11.36'	09°45'40"	22.63'
C107	133.00'	57.49'	29.20'	24°45'58"	57.04'
C108	100.00'	26.81'	13.49'	15°21'48"	26.73'
C109	100.00'	21.26'	10.67'	12°10'46"	21.22'
C110	50.00'	48.07'	26.08'	55°05'07"	46.24'
C111	100.00'	48.07'	24.51'	27°32'33"	47.61'
C112	367.00'	26.34'	13.17'	04°06'42"	26.33'
C113	367.00'	82.61'	41.48'	12°53'48"	82.43'
C114	30.00'	0.46'	0.23'	00°53'13"	0.46'
C115	1048.00'	125.08'	62.61'	06°50'18"	125.01'
C116	1048.00'	47.85'	23.93'	02°36'58"	47.84'
C117	278.00'	49.75'	24.94'	10°15'12"	49.68'
C118	222.00'	77.09'	38.94'	19°53'44"	76.70'
C119	222.00'	40.02'	20.06'	10°19'40"	39.96'
C120	133.00'	47.10'	23.80'	20°17'29"	46.86'
C121	133.00'	37.28'	18.76'	16°03'35"	37.16'
C122	192.00'	69.21'	34.99'	20°39'14"	68.84'
C123	192.00'	38.13'	19.13'	11°22'44"	38.07'



LINE TABLE		
LINE	BEARING	LENGTH
(L9)	S69°50'31"W	105.25'
(L10)	S80°12'17"W	96.91'
(L11)	S85°27'25"W	131.88'
(L12)	N32°09'39"W	51.14'
L13	N85°09'22"W	75.81'
L14	N68°44'35"W	30.17'
L27	N08°49'09"W	50.30'
L45	N68°44'35"W	54.91'
L46	N85°09'22"W	16.61'
L47	N85°09'22"W	16.30'
L48	S68°44'35"E	30.28'
L49	N86°59'49"E	63.29'
L50	N68°44'35"W	63.29'
L51	N89°37'27"E	33.18'
L52	N84°02'55"E	49.99'
L53	N84°02'55"E	38.73'
L54	S40°43'07"E	89.20'
L55	S81°51'32"E	101.79'
L56	S87°52'20"E	46.11'
L57	S49°46'40"E	20.24'
L58	S79°00'42"E	36.01'
L81	N06°23'36"W	7.00'
L82	N03°35'21"W	8.09'



TOOTHMAN-ORTON ENGINEERING COMPANY

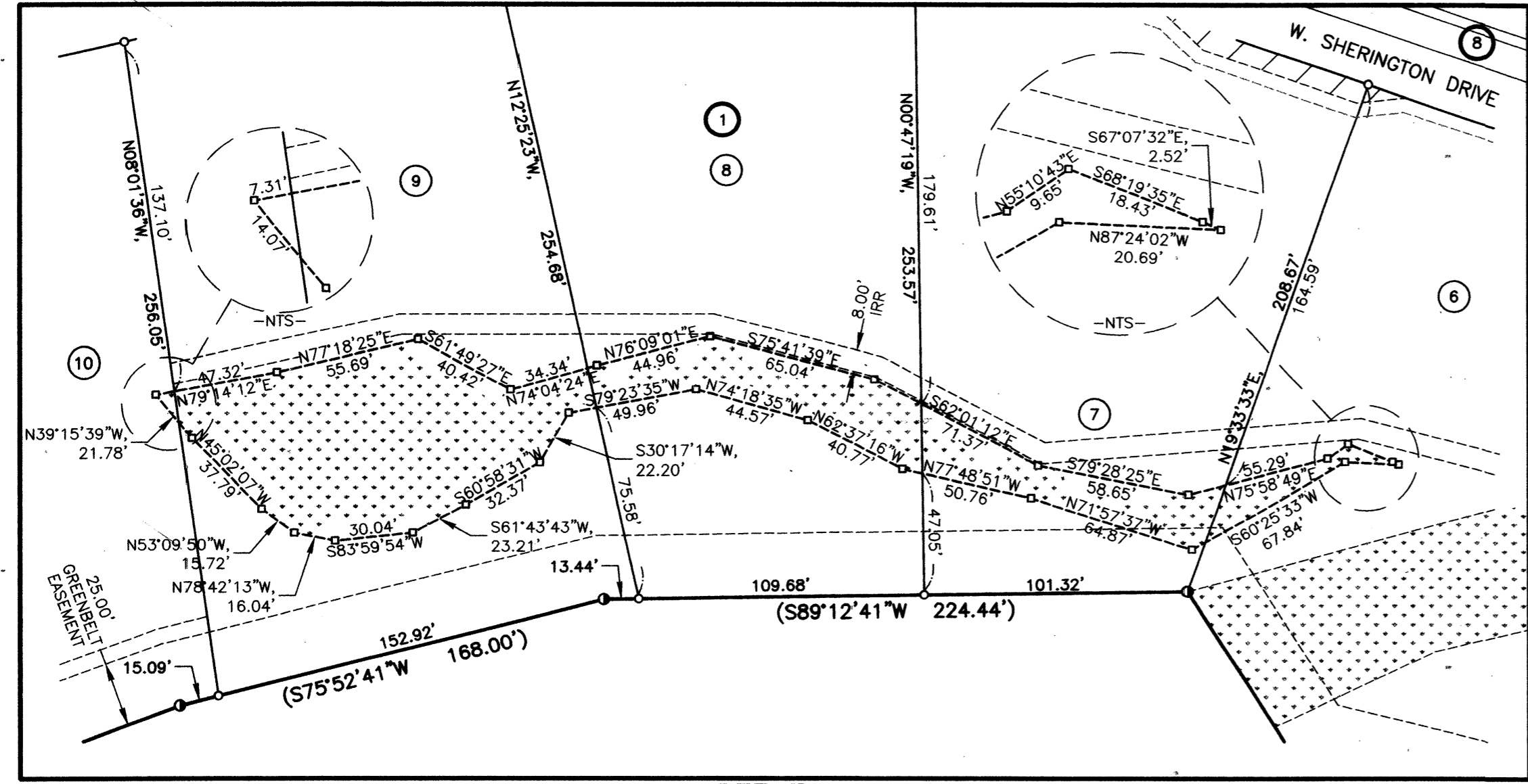
9777 CHINDEN BOULEVARD  
BOISE, IDAHO 83714  
(208) 323-2288

SHEET NO. 3 OF 9

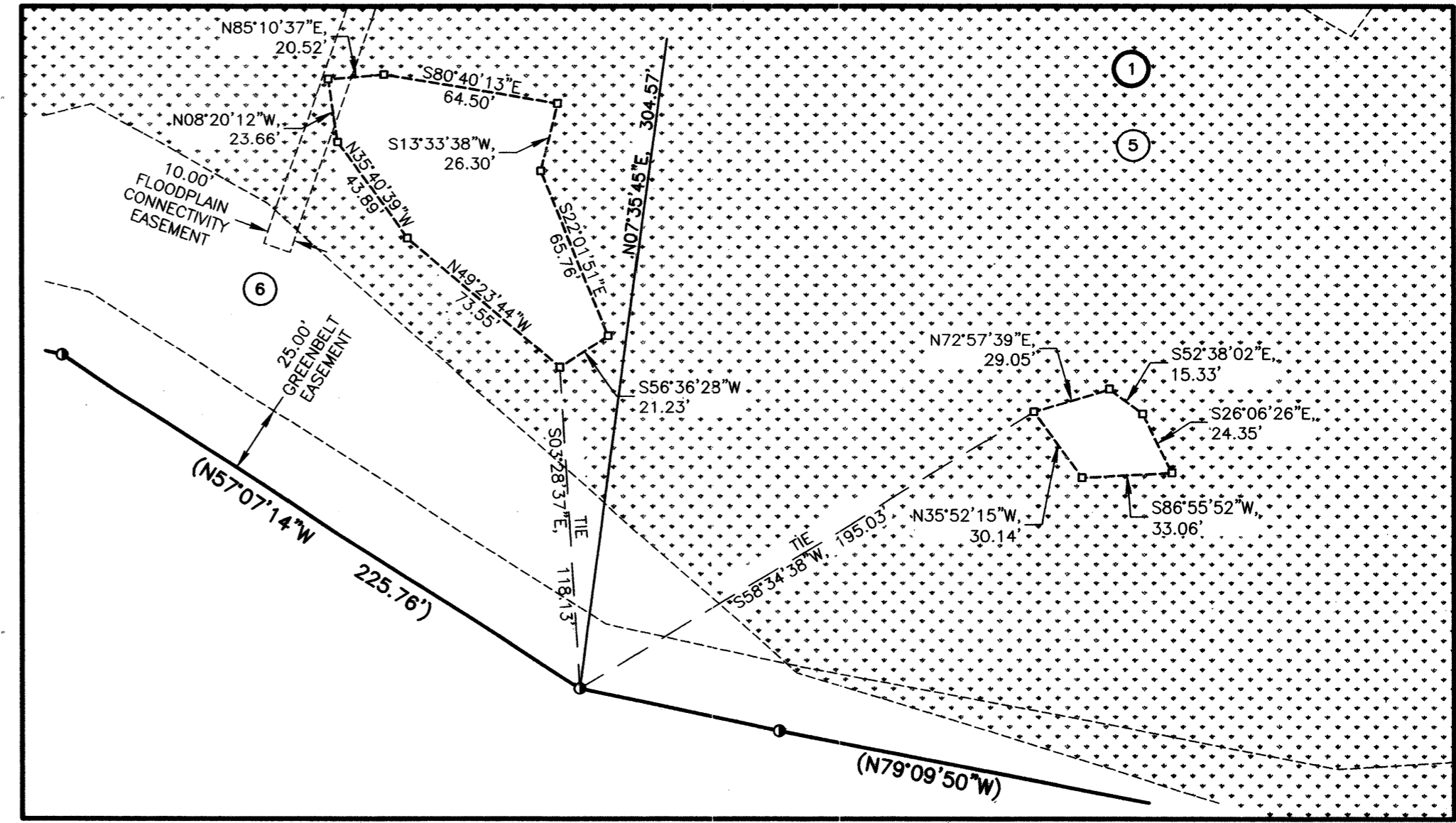
# THE SHORES SUBDIVISION - PHASE 1

A PARCEL OF LAND SITUATED IN THE S1/2 OF SECTION 17,  
AND IN GOVERNMENT LOTS 2, 3, AND 4 OF SECTION 20,  
T.4N., R.1E., B.M., ADA COUNTY, IDAHO.

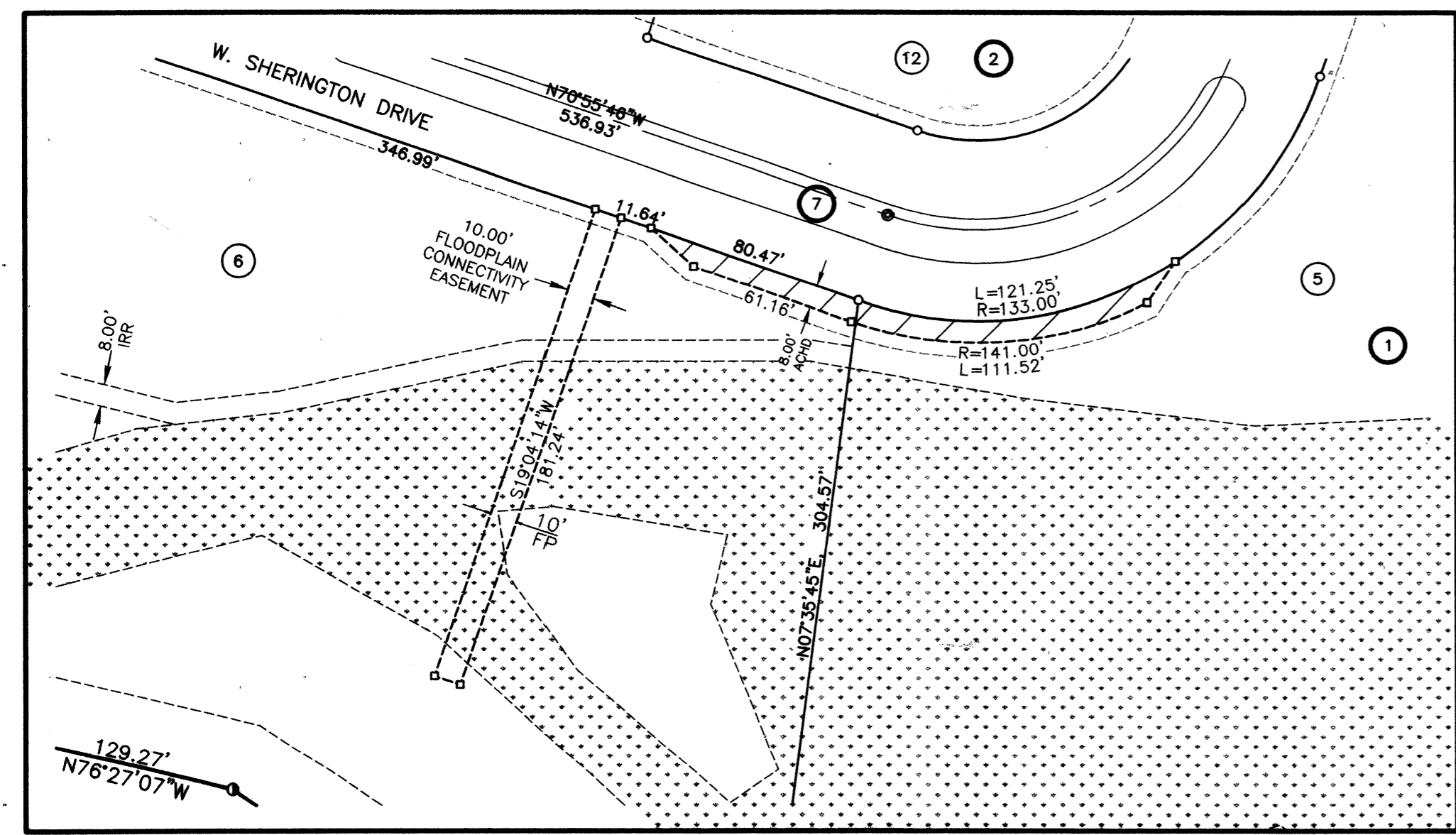
2006



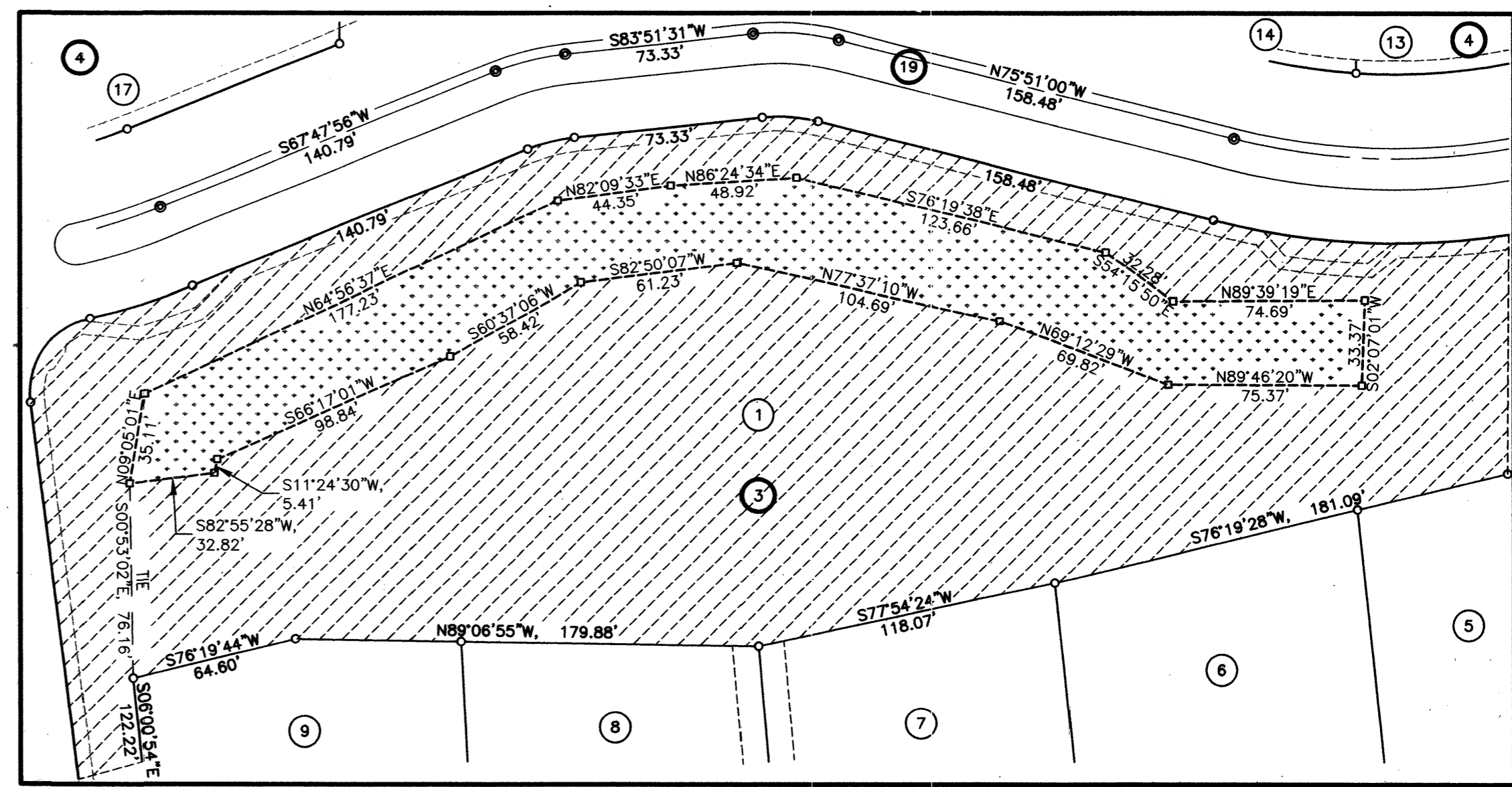
DETAIL A



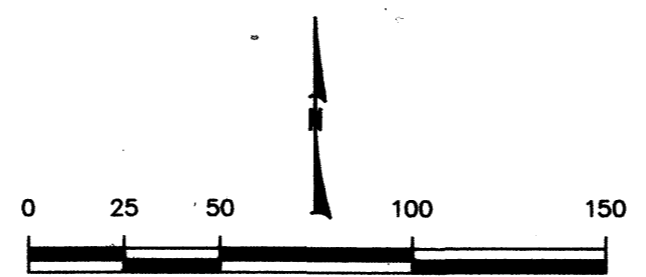
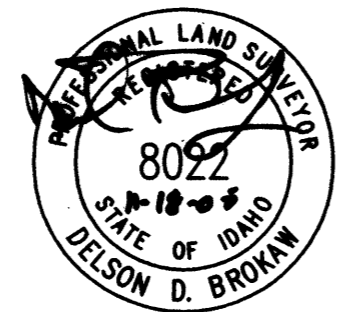
DETAIL B



DETAIL C



DETAIL D

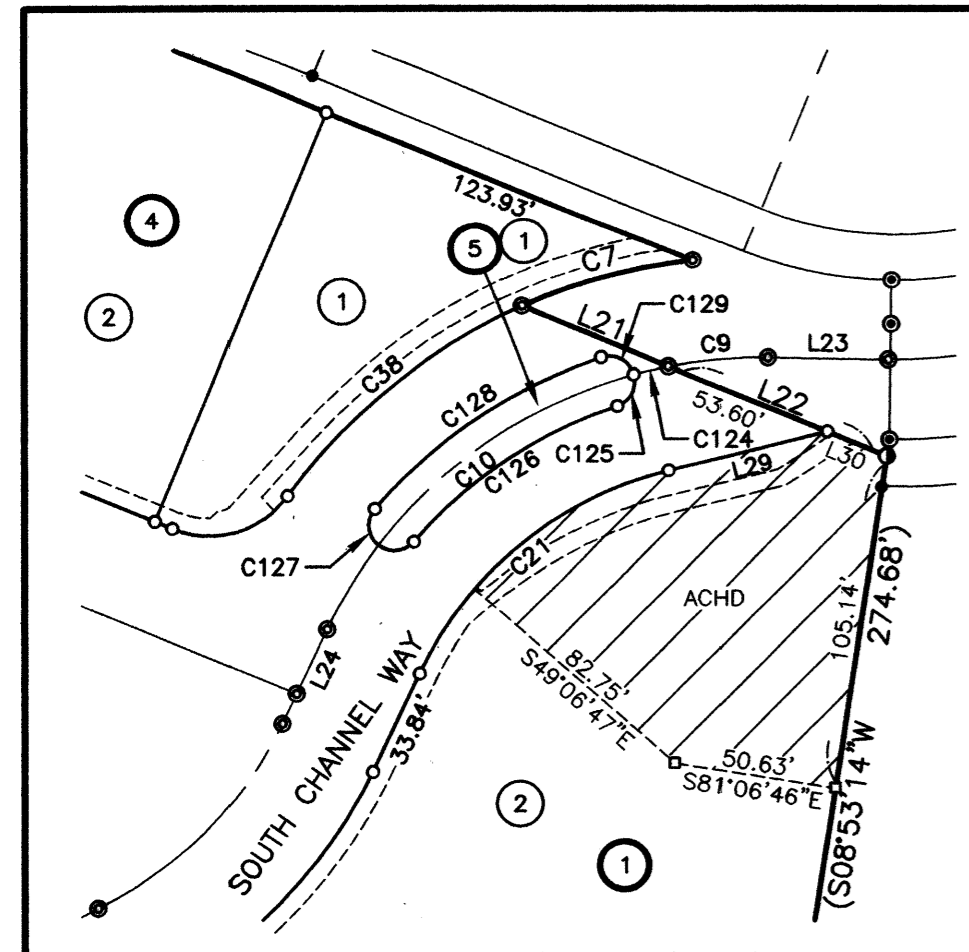


TOOTHMAN-ORTON ENGINEERING COMPANY

9777 CHINDEN BOULEVARD  
BOISE, IDAHO 83714  
(208) 323-2288

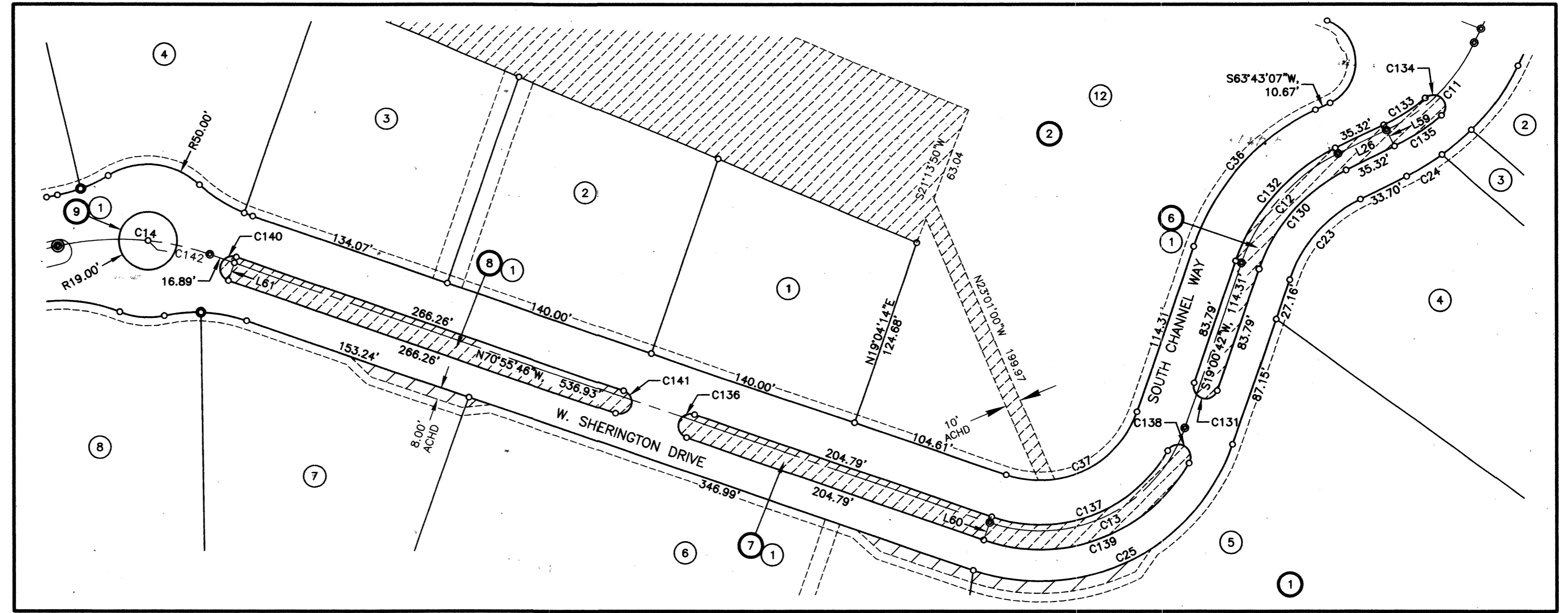
# THE SHORES SUBDIVISION - PHASE 1

A PARCEL OF LAND SITUATED IN THE S1/2 OF SECTION 17,  
AND IN GOVERNMENT LOTS 2, 3, AND 4 OF SECTION 20,  
T.4N., R.1E., B.M., ADA COUNTY, IDAHO.  
2006



LINE TABLE		
LINE	BEARING	LENGTH
L21	S67°33'58"E	49.50'
L22	S67°33'58"E	73.72'
L23	N89°05'06"W	37.67'
L24	S25°31'50"W	22.23'
L26	S63°43'07"W	35.32'
L29	N76°02'45"E	50.98'
L30	S67°33'58"E	20.12'
L59	S26°16'53"E	12.00'
L60	S19°04'14"W	12.00'
L61	S19°04'14"W	12.00'
L62	S12°53'40"E	12.00'

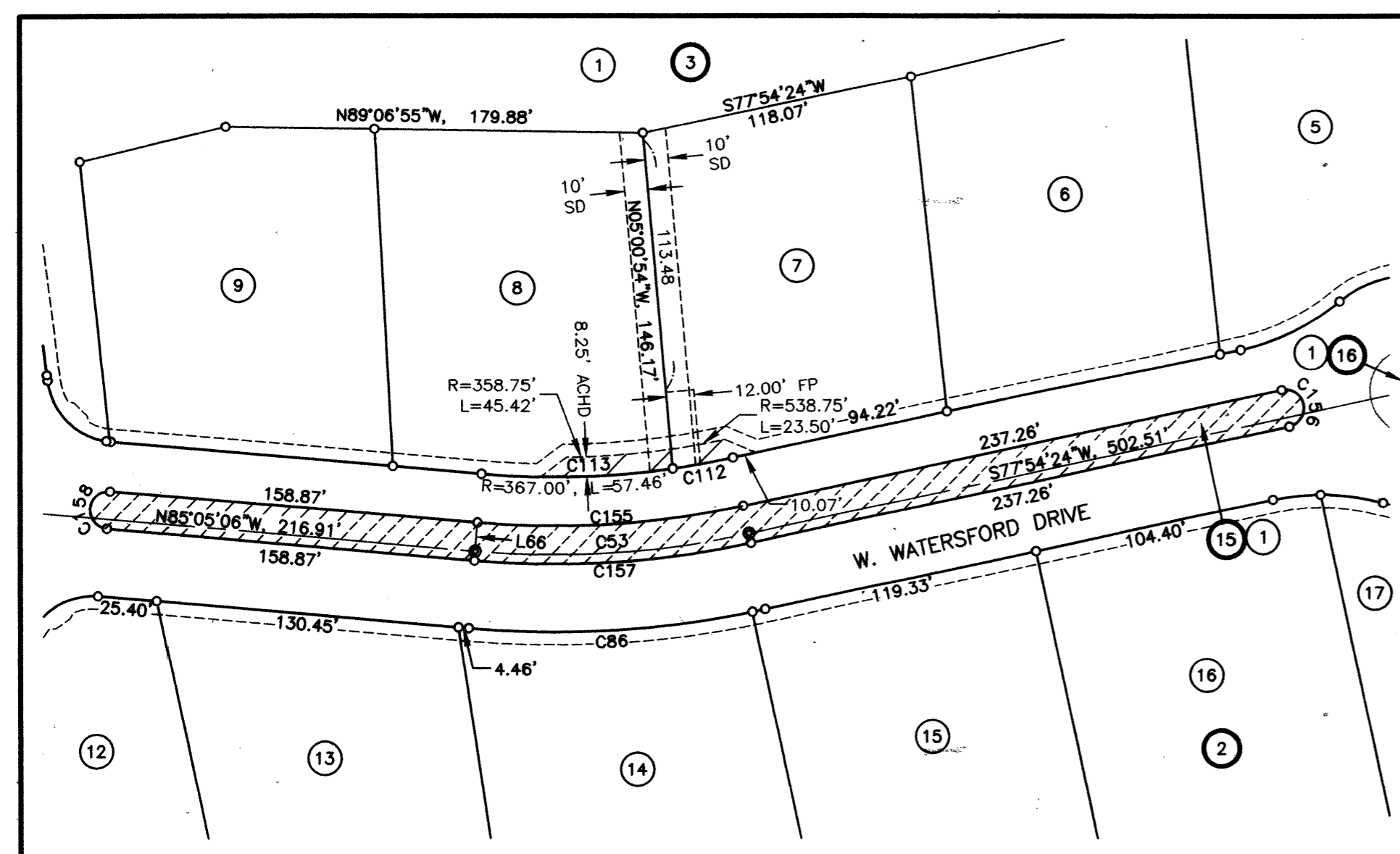
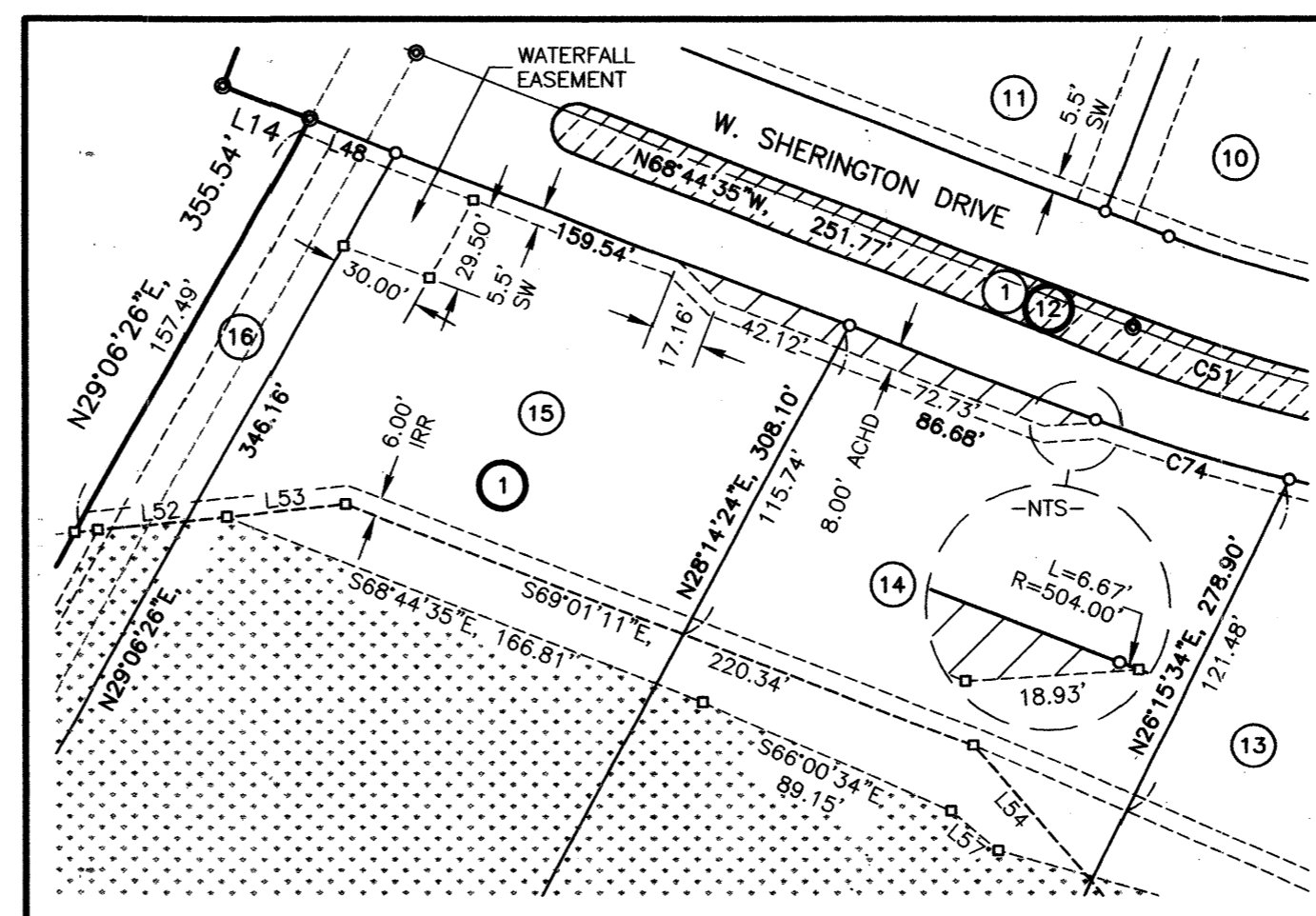
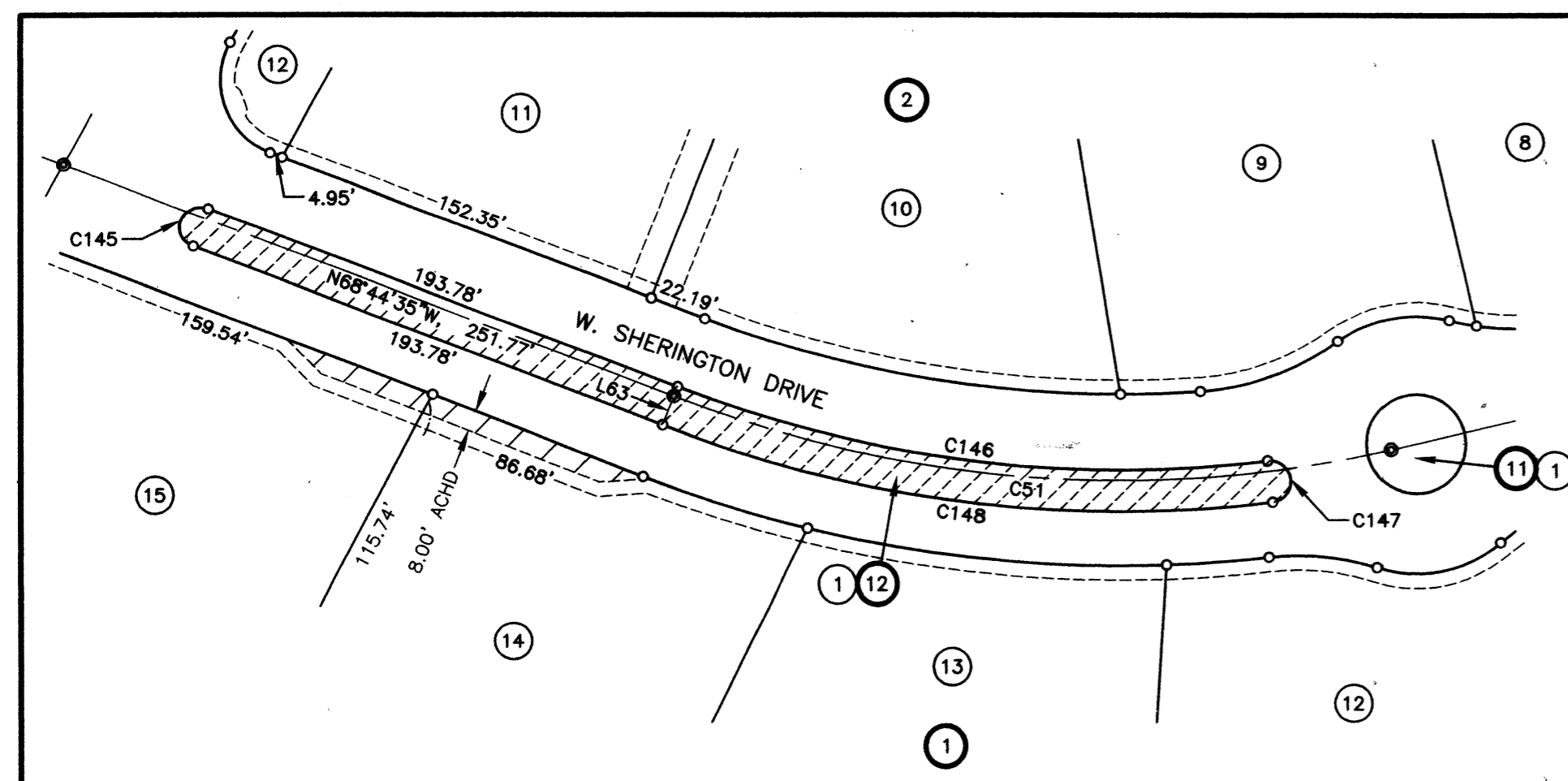
CURVE TABLE						
CURVE	RADIUS	LENGTH	TANGENT	DELTA	BEARING	CHORD
C7	182.00'	55.66'	28.05'	17°31'23"	S74°40'34"W	55.45'
C9	150.00'	31.09'	15.60'	11°52'31"	S84°58'39"W	31.03'
C10	150.00'	140.09'	75.62'	53°30'33"	S52°17'06"W	135.05'
C12	125.00'	97.54'	51.40'	44°42'25"	S41°21'55"W	95.08'
C13	100.00'	157.18'	100.10'	90°03'32"	S64°02'28"W	141.49'
C14	180.00'	100.42'	51.55'	31°57'54"	N86°54'43"W	99.12'
C21	118.00'	104.04'	55.67'	50°30'55"	N50°47'17"E	100.70'
C23	92.00'	71.79'	37.83'	44°42'25"	N41°21'55"E	69.98'
C24	158.00'	27.15'	13.61'	09°50'43"	N58°47'45"E	27.12'
C25	133.00'	209.05'	133.14'	90°03'32"	N64°02'28"E	188.19'
C36	158.00'	123.28'	64.97'	44°42'25"	S41°21'55"W	120.18'
C37	67.00'	105.31'	67.07'	90°03'33"	S64°02'28"W	94.80'
C38	182.00'	95.75'	49.01'	30°08'33"	S50°50'36"W	94.65'
C82	438.00'	163.54'	82.73'	21°23'34"	N79°26'22"W	162.59'
C83	30.00'	51.23'	34.42'	97°51'01"	N19°49'04"W	45.23'
C84	283.00'	62.14'	31.19'	12°34'50"	N22°49'01"E	62.01'
C85	30.00'	41.04'	24.46'	78°23'18"	N55°43'15"E	37.92'
C87	433.00'	5.67'	2.84'	00°45'03"	N78°16'56"E	5.67'
C88	100.00'	20.75'	10.41'	11°53'13"	N83°51'01"E	20.71'
C89	100.00'	27.32'	13.75'	15°39'21"	S82°22'42"E	27.24'
C90	50.00'	48.07'	26.08'	55°05'08"	N77°54'24"E	46.24'
C91	100.00'	48.07'	24.51'	27°32'33"	N64°08'08"E	47.61'
C92	67.00'	40.38'	20.82'	34°31'38"	S84°49'47"E	39.77'
C93	30.00'	41.58'	24.08'	77°30'04"	N45°26'51"W	37.56'
C94	283.00'	2.49'	1.25'	00°30'16"	N06°56'56"W	2.49'
C95	30.00'	44.09'	27.11'	84°11'53"	N34°53'53"E	40.22'
C124	150.00'	11.10'	5.55'	04°14'20"	S76°55'14"W	11.09'
C125	8.00'	12.35'	7.79'	88°28'19"	S27°30'32"W	11.16'
C126	142.00'	77.78'	39.89'	31°23'04"	S56°03'10"W	76.81'
C127	8.00'	25.13'	-	180°00'00"	N49°38'22"W	16.00'
C128	158.00'	86.55'	44.39'	31°23'04"	N56°03'10"E	85.47'
C129	8.00'	12.78'	8.22'	91°31'41"	S62°29'28"E	11.46'
C130	113.00'	88.17'	46.47'	44°42'25"	S41°21'55"W	85.95'
C131	8.00'	25.13'	-	180°00'00"	N70°59'18"W	16.00'



# THE SHORES SUBDIVISION - PHASE 1

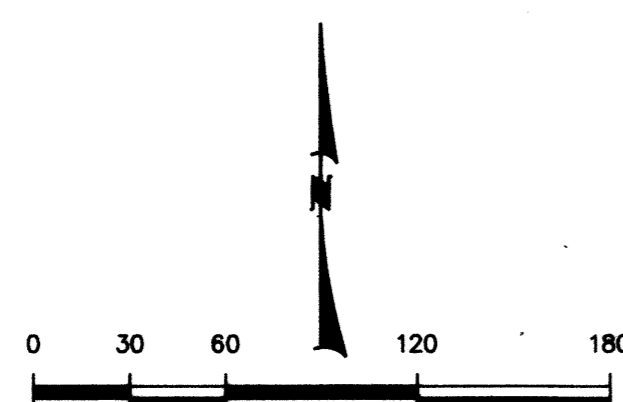
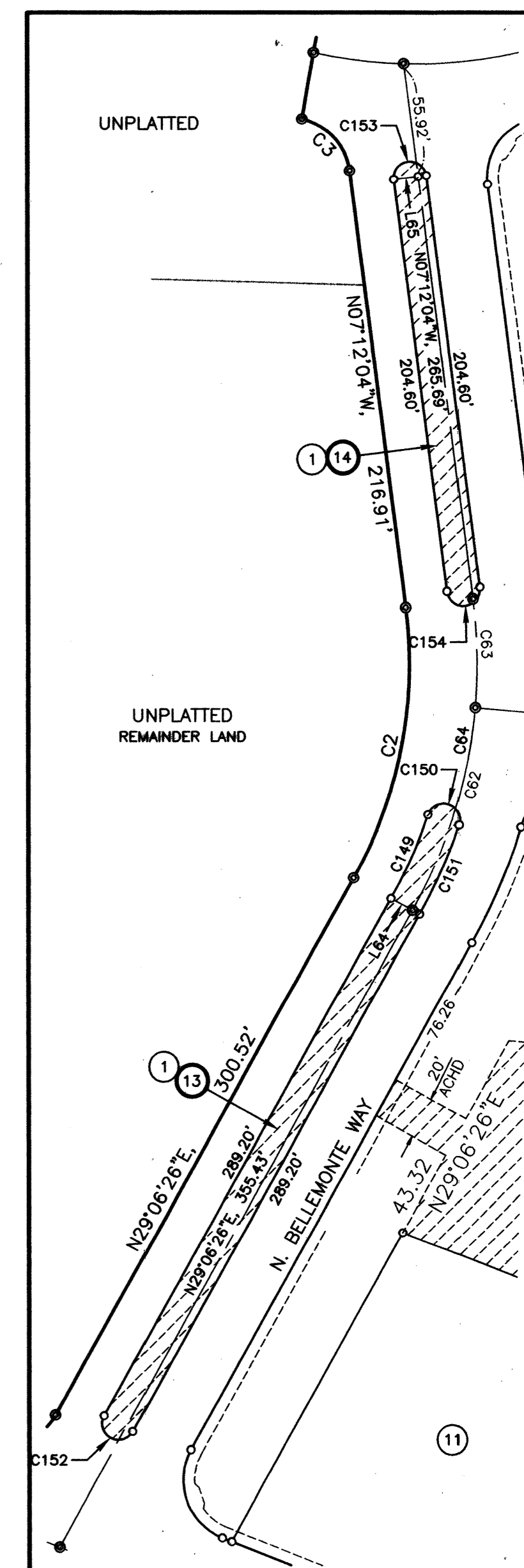
A PARCEL OF LAND SITUATED IN THE S1/2 OF SECTION 17,  
AND IN GOVERNMENT LOTS 2, 3, AND 4 OF SECTION 20,  
T.4N., R.1E., B.M., ADA COUNTY, IDAHO.

2006



LINE	BEARING	LENGTH
L14	N68°44'35"W	30.17'
L48	S68°44'35"E	30.28'
L52	N84°02'55"E	42.34'
L53	N84°02'55"E	38.73'
L54	S40°43'07"E	89.20'
L57	S49°46'40"E	20.24'
L63	S21°15'25"W	12.00'
L64	N60°53'34"W	12.00'
L65	S82°47'56"W	12.00'
L66	N04°54'54"E	12.00'

CURVE	RADIUS	LENGTH	TANGENT	DELTA	BEARING	CHORD
C2	217.00'	137.51'	71.15'	36°18'30"	N10°57'11"E	135.22'
C3	30.00'	36.83'	21.14'	70°20'30"	N42°22'19"W	34.56'
C51	471.00'	280.74'	144.68'	34°09'05"	N85°49'08"W	276.60'
C53	400.00'	118.74'	59.81'	17°00'30"	S86°24'39"W	118.30'
C62	250.00'	105.56'	53.58'	24°11'32"	N17°00'40"E	104.78'
C63	250.00'	52.87'	26.53'	12°06'58"	N01°08'35"W	52.77'
C64	250.00'	158.43'	81.97'	36°18'30"	N10°57'11"E	155.79'
C74	504.00'	66.51'	33.30'	07°33'38"	S72°31'24"E	66.46'
C145	8.00'	25.13'	-	180°00'00"	S21°15'25"W	16.00'
C146	467.00'	231.14'	117.99'	28°21'32"	S82°55'21"E	228.79'
C147	8.00'	25.13'	-	180°00'00"	S07°06'07"E	16.00'
C148	483.00'	239.06'	122.03'	28°21'32"	N82°55'21"W	236.63'
C149	238.00'	45.15'	22.64'	10°52'07"	N23°40'23"E	45.08'
C150	8.00'	25.13'	-	180°00'00"	S71°45'41"E	16.00'
C151	254.00'	48.18'	24.16'	10°52'07"	S23°40'23"W	48.11'
C152	8.00'	25.13'	-	180°00'00"	N60°53'34"W	16.00'
C153	8.00'	25.13'	-	180°00'00"	N82°47'56"E	16.00'
C154	8.00'	25.13'	-	180°00'00"	S82°47'56"W	16.00'
C155	388.00'	115.18'	58.02'	17°00'30"	N86°24'39"E	114.76'
C156	8.00'	25.13'	-	180°00'00"	S12°05'36"E	16.00'
C157	404.00'	119.93'	60.41'	17°00'30"	S86°24'39"W	119.49'
C158	8.00'	25.13'	-	180°00'00"	N04°54'54"E	16.00'



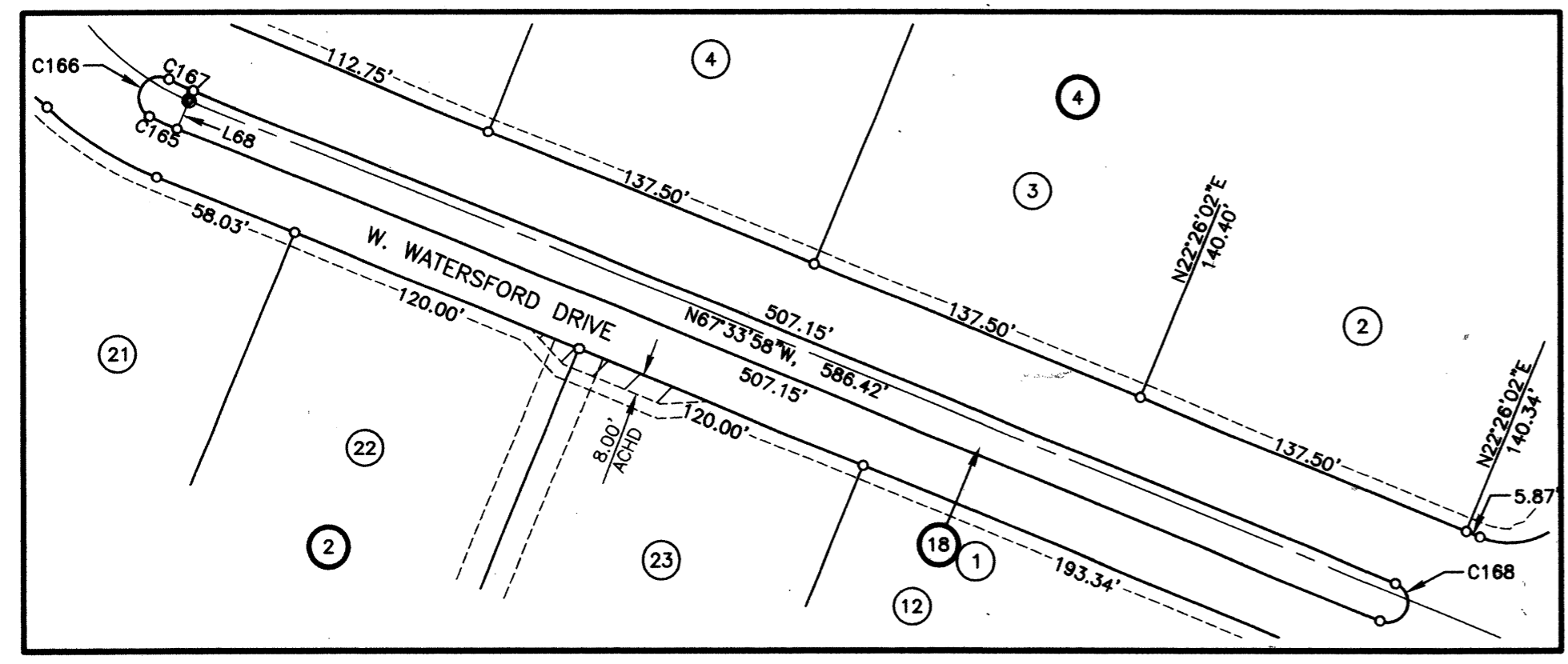
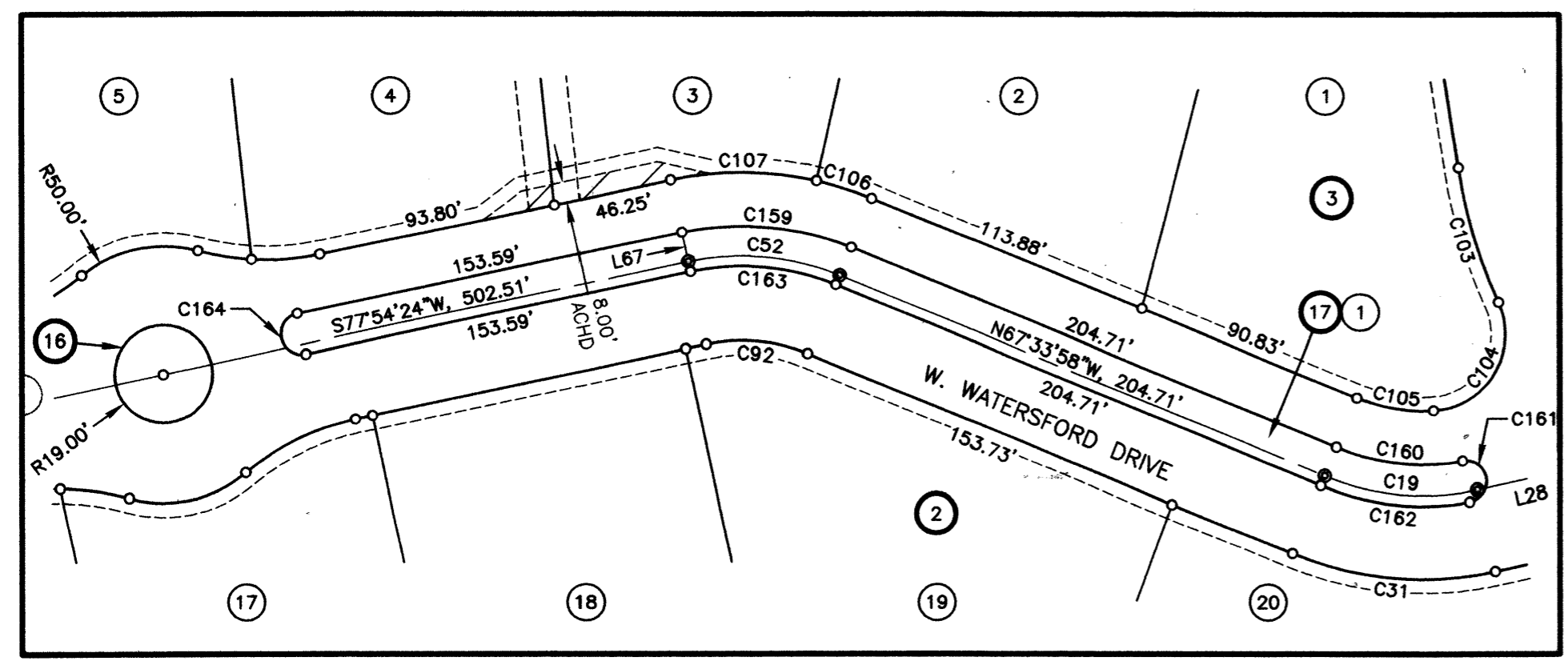
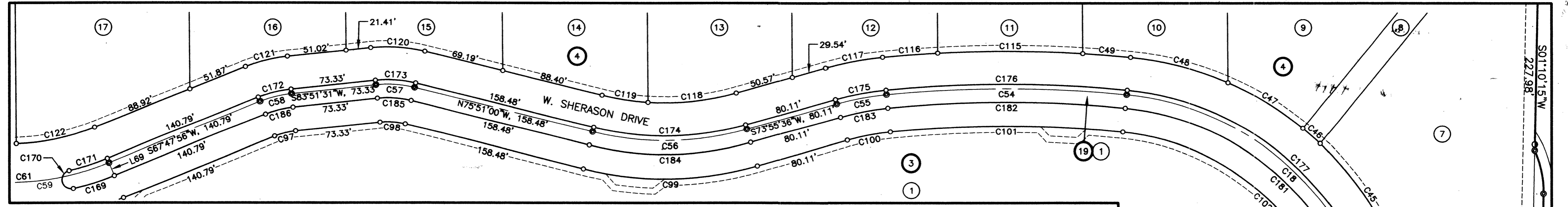
TOOTHMAN-ORTON ENGINEERING COMPANY

9777 CHINDEN BOULEVARD  
BOISE, IDAHO 83714  
(208) 323-2288

SHEET NO. 6 OF 9

# THE SHORES SUBDIVISION – PHASE 1

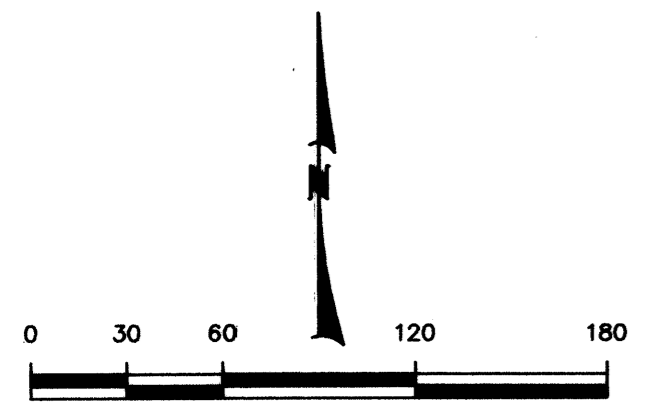
A PARCEL OF LAND SITUATED IN THE S1/2 OF SECTION 17,  
AND IN GOVERNMENT LOTS 2, 3, AND 4 OF SECTION 20,  
T.4N., R.1E., B.M., ADA COUNTY, IDAHO.  
2006



LINE TABLE		
LINE	BEARING	LENGTH
L27	N08°49'09"W	50.30'
L28	S77°42'32"W	75.30'
L67	N12°05'36"W	12.00'
L68	S22°26'02"W	12.00'
L69	S22°12'04"E	12.00'

CURVE TABLE						
CURVE	RADIUS	LENGTH	TANGENT	DELTA	BEARING	CHORD
C17	175.00'	54.25'	27.35'	17°45'45"	N17°42'02"W	54.04'
C18	245.00'	321.90'	188.95'	75°16'47"	N46°27'32"W	299.24'
C19	100.00'	60.61'	31.27'	34°43'30"	N84°55'43"W	59.68'
C31	133.00'	80.61'	41.58'	34°43'30"	S84°55'43"E	79.38'
C42	142.00'	44.02'	22.19'	17°45'45"	N17°42'02"W	43.85'
C43	278.00'	59.55'	29.89'	12°16'24"	N14°57'21"W	59.44'
C45	278.00'	122.14'	62.07'	25°10'21"	N33°40'43"W	121.16'
C46	278.00'	20.03'	10.02'	04°07'41"	N48°19'44"W	20.03'
C47	278.00'	76.42'	38.45'	15°45'02"	N58°16'06"W	76.18'
C48	278.00'	87.12'	43.92'	17°57'19"	N75°07'16"W	86.76'
C49	1048.00'	41.46'	20.73'	02°16'00"	N85°13'56"W	41.46'
C52	100.00'	60.26'	31.08'	34°31'38"	N84°49'47"W	59.35'
C54	1015.00'	207.64'	104.18'	11°43'16"	N89°57'34"W	207.28'
C55	245.00'	43.84'	21.98'	10°15'12"	S79°03'12"W	43.79'
C56	255.00'	134.51'	68.86'	30°13'24"	S89°02'18"W	132.96'
C57	95.00'	33.64'	17.00'	20°17'29"	N85°59'45"W	33.47'
C58	100.00'	28.03'	14.11'	16°03'35"	S75°49'43"W	27.94'
C59	225.00'	92.92'	47.13'	23°39'43"	S79°37'48"W	92.26'
C61	225.00'	137.50'	70.97'	35°00'54"	S85°18'23"W	135.37'
C92	67.00'	40.38'	20.82'	34°31'38"	S84°49'47"E	39.77'
C97	67.00'	18.78'	9.45'	16°03'35"	N75°49'43"E	18.72'
C98	62.00'	21.96'	11.09'	20°17'29"	S85°59'45"E	21.84'
C99	288.00'	151.92'	77.77'	30°13'24"	N89°02'18"E	150.16'
C100	212.00'	37.94'	19.02'	10°15'12"	N79°03'12"E	37.89'
C101	982.00'	200.89'	100.80'	11°43'16"	S89°57'34"E	200.54'
C102	212.00'	278.54'	163.50'	75°16'47"	S46°27'32"E	258.93'
C105	67.00'	30.34'	15.43'	25°56'46"	N80°32'21"W	30.08'
C106	133.00'	22.66'	11.36'	09°45'40"	N72°26'48"W	22.63'
C107	133.00'	57.49'	29.20'	24°45'58"	N89°42'37"W	57.04'
C115	1048.00'	125.08'	62.61'	06°50'18"	N89°47'05"W	125.01'
C116	1048.00'	47.85'	23.93'	02°36'58"	S85°29'17"W	47.84'
C117	278.00'	49.75'	24.94'	10°15'12"	S79°03'12"W	49.68'
C118	222.00'	77.09'	38.94'	19°53'44"	S83°52'28"W	76.70'
C119	222.00'	40.02'	20.06'	10°19'40"	N81°00'50"W	39.96'
C120	133.00'	47.10'	23.80'	20°17'29"	N85°59'45"W	46.86'
C121	133.00'	37.28'	18.76'	16°03'35"	S75°49'43"W	37.16'
C122	192.00'	69.21'	34.99'	20°39'14"	S78°07'33"W	68.84'

CURVE TABLE						
CURVE	RADIUS	LENGTH	TANGENT	DELTA	BEARING	CHORD
C159	112.00'	67.49'	34.81'	34°31'38"	S84°49'47"E	66.48'
C160	88.00'	50.04'	25.72'	32°34'55"	S83°51'25"E	49.37'
C161	8.00'	25.13'	—	180°00'00"	S10°08'53"E	16.00'
C162	104.00'	59.14'	30.39'	32°34'55"	N83°51'25"W	58.35'
C163	96.00'	57.85'	29.83'	34°31'38"	N84°49'47"W	56.98'
C164	8.00'	25.13'	—	180°00'00"	N12°05'36"W	16.00'
C165	112.00'	11.94'	5.98'	06°06'27"	N64°30'44"W	11.93'
C166	8.00'	25.13'	—	180°00'00"	N28°32'29"E	16.00'
C167	96.00'	10.23'	5.12'	06°06'27"	S64°30'44"E	10.23'
C168	8.00'	25.13'	—	180°00'00"	S22°26'02"W	16.00'
C169	237.00'	36.93'	18.50'	08°55'38"	S72°15'45"W	36.89'
C170	8.00'	25.13'	—	180°00'00"	N13°16'26"W	16.00'
C171	221.00'	34.43'	17.25'	08°55'38"	N72°15'45"E	34.40'
C172	104.00'	29.15'	14.67'	16°03'35"	N75°49'43"E	29.06'
C173	99.00'	35.06'	17.72'	20°17'29"	S85°59'45"E	34.88'
C174	251.00'	132.40'	67.78'	30°13'24"	N89°02'18"E	130.87'
C175	249.00'	44.56'	22.34'	10°15'12"	N79°03'12"E	44.50'
C176	1019.00'	208.46'	104.59'	11°43'16"	S89°57'34"E	208.10'
C177	249.00'	327.16'	192.03'	75°16'47"	S46°27'32"E	304.13'
C178	171.00'	42.22'	21.22'	14°08'41"	S15°53'29"E	42.11'
C179	8.00'	25.13'	—	180°00'00"	S67°02'10"W	16.00'
C180	187.00'	46.17'	23.20'	14°08'41"	N15°53'29"W	46.05'
C181	233.00'	306.13'	179.69'	75°16'47"	N46°27'32"W	284.58'
C182	1003.00'	205.19'	102.95'	11°43'16"	N89°57'34"W	204.83'
C183	233.00'	41.70'	20.90'	10°15'12"	S79°03'12"W	41.64'
C184	267.00'	140.84'	72.10'	30°13'24"	S89°02'18"W	139.21'
C185	83.00'	29.39'	14.85'	20°17'29"	N85°59'45"W	29.29'
C186	88.00'	24.67'	12.41'	16°03'34"	S75°49'43"W	24.58'



TOOTHMAN-ORTON ENGINEERING COMPANY  
8777 CHINDEN BOULEVARD  
BOISE, IDAHO 83714  
(208) 323-2288

# THE SHORES SUBDIVISION — PHASE 1

## CERTIFICATE OF OWNERS

KNOW ALL MEN BY THESE PRESENTS, THAT THE UNDERSIGNED ARE THE OWNERS OF THE PROPERTY HEREINAFTER DESCRIBED:

A parcel of land situated in the South 1/2 of Section 17 and in Government Lots 2, 3, and 4 of Section 20, T.4N., R.1E., B.M., City of Eagle, Ada County, Idaho, more particularly described as follows:

COMMENCING at the 1/4 corner common to said Sections 17 and 20, as shown on Amended Record of Survey No. 6619, Ada County records, from which point, the southeast corner of said Section 17 bears N.88°44'12"E., 2677.97 feet; thence, along the south line of said section,

A) N.88°44'12"E., 672.50 feet to the POINT OF BEGINNING; thence, along the exterior boundary of said survey through the following courses: continuing,

- 1) N.88°44'12"E., 214.39 feet to a point on the north bank of the South Channel of the Boise River as shown on said survey; thence, along said north bank through the following courses:
- 2) S.36°10'18"W., 30.06 feet; thence,
- 3) S.36°39'00"W., 67.18 feet; thence,
- 4) S.52°13'16"W., 146.40 feet; thence,
- 5) S.34°06'13"W., 119.07 feet; thence,
- 6) S.30°37'07"W., 64.55 feet; thence,
- 7) S.19°04'55"W., 202.21 feet; thence,
- 8) S.86°23'40"W., 112.92 feet; thence,
- 9) N.79°09'50"W., 207.09 feet; thence,
- 10) N.77°49'00"W., 74.65 feet; thence,
- 11) N.57°07'14"W., 225.76 feet; thence,
- 12) N.76°27'07"W., 129.27 feet; thence,
- 13) N.32°43'33"W., 78.21 feet; thence,
- 14) S.89°12'41"W., 224.44 feet; thence,
- 15) S.75°52'41"W., 168.00 feet; thence,
- 16) S.69°50'31"W., 105.25 feet; thence,
- 17) S.80°12'17"W., 96.91 feet; thence,
- 18) S.57°00'51"W., 188.04 feet; thence,
- 19) S.85°27'25"W., 131.88 feet; thence,
- 20) N.76°24'41"W., 219.14 feet; thence,
- 21) N.32°09'39"W., 51.14 feet; thence,
- 22) N.79°45'54"W., 299.88 feet; thence,
- 23) N.85°09'22"W., 75.81 feet; thence, leaving said north bank and survey boundary,
- 24) N.29°06'26"E., 355.54 feet; thence,
- 25) N.68°44'35"W., 30.17 feet; thence,
- 26) N.21°15'25"E., 66.00 feet to a point on a non-tangent curve; thence,
- 27) Northeasterly along said curve to the left having a radius of 30.00 feet, an arc length of 43.01 feet, through a central angle of 82°08'59", and a chord bearing and distance of N.70°10'56"E., 39.42 feet; thence, tangent from said curve,
- 28) N.29°06'26"E., 300.52 feet to the beginning of a tangent curve; thence,
- 29) Northeasterly along said curve to the left having a radius of 217.00 feet, an arc length of 137.51 feet, through a central angle of 36°18'30", and a chord bearing and distance of N.10°57'11"E., 135.22 feet; thence, tangent from said curve,
- 30) N.07°12'04"W., 216.91 feet to the beginning of a tangent curve; thence,
- 31) Northwestery along said curve to the left having a radius of 30.00 feet, an arc length of 36.83 feet, through a central angle of 70°20'30", and a chord bearing and distance of N.42°22'19"W., 34.56 feet; thence, non-tangent from said curve,
- 32) N.10°01'41"E., 66.08 feet to a point on a non-tangent curve; thence,
- 33) Southeasterly along said curve to the left having a radius of 192.00 feet, an arc length of 11.60 feet, through a central angle of 03°27'41", and a chord bearing and distance of S.78°26'15"E., 11.60 feet; thence, non-tangent from said curve,
- 34) N.00°53'27"E., 215.73 feet to the southwesterly corner of Lot 23, Block 20 of Two Rivers Subdivision No. 3, according to the official plat thereof recorded in Book 82 of Plats at Pages 8979 through 8981, Ada County Records; thence, along the southerly line of said Block 20,
- 35) N.89°37'27"E., 1348.70 feet to the southeasterly corner of Lot 19 of said block, said point being on the westerly line of Lot 44, Block 20 of Two Rivers Subdivision No. 8, according to the official plat thereof recorded in Book 87 of Plats, at Pages 10005 through 10007, Ada County records; thence, along said westerly line,
- 36) S.01°10'15"W., 227.98 feet; thence, leaving said survey exterior boundary, continuing,
- 37) S.01°10'15"W., 5.07 feet to the beginning of a non-tangent curve on the northeasterly line of Parcel 1 as described in Instrument No. 106003087, Ada County records; thence, along said northeasterly line through the following courses:
- 38) Southeasterly along said curve to the right having a radius of 86.50 feet, an arc length of 38.46 feet, through a central angle of 25°28'26", and a chord bearing and distance of S.11°32'39"E., 38.14 feet; thence, tangent from said curve,

## CERTIFICATE CONT'D

- 39) S.01°12'29"W., 120.48 feet to the beginning of a tangent curve; thence,
- 40) Southeasterly along said curve to the left having a radius of 53.50 feet, an arc length of 64.27 feet, through a central angle of 68°49'40", and a chord bearing and distance of S.33°07'32"E., 60.47 feet; thence, tangent from said curve,
- 41) S.67°32'22"E., 649.01 feet to the beginning of a non-tangent curve; thence,
- 42) Southwesterly along said curve to the left having a radius of 182.00 feet, an arc length of 55.66 feet, through a central angle of 17°31'23", and a chord bearing and distance of S.74°40'34"W., 55.45 feet; thence, leaving said northeasterly line, non-tangent from said curve,
- 43) S.67°33'58"E., 123.22 feet to a point on the westerly boundary of Two Rivers Subdivision No. 7, according to the official plat thereof recorded in Book 87 of Plats at Pages 9934 through 9937, Ada County records; thence, along the exterior boundary of said subdivision through the following courses:
- 44) S.08°53'14"W., 274.68 feet to the POINT OF BEGINNING.

CONTAINING 59.16 acres, more or less.

IT IS THE INTENTION OF THE UNDERSIGNED TO, AND THEY DO HEREBY INCLUDE SAID LAND IN THIS PLAT: THAT THE UNDERSIGNED DOES BY THESE PRESENTS DEDICATE TO THE PUBLIC ALL PUBLIC STREETS AS SHOWN ON SAID PLAT. THE EASEMENTS INDICATED ON SAID PLAT ARE NOT DEDICATED TO THE PUBLIC, BUT THE RIGHT TO USE SAID EASEMENTS IS HEREBY PERPETUALLY RESERVED FOR PUBLIC UTILITIES OR FOR SUCH OTHER USES AS DESIGNATED HEREON, AND NO PERMANENT STRUCTURES ARE TO BE ERECTED WITHIN THE LINES OF SAID EASEMENTS.

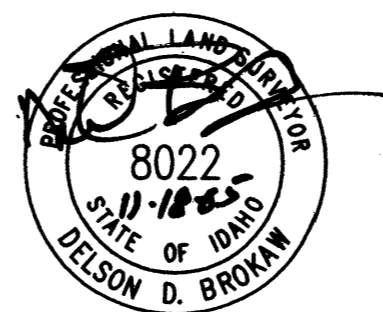
ALL OF THE LOTS WITHIN THIS PLAT WILL BE ELIGIBLE TO RECEIVE DOMESTIC WATER SERVICE FROM UNITED WATER IDAHO, INC., A PUBLIC UTILITY, SUBJECT TO THE REGULATIONS OF THE IDAHO PUBLIC UTILITIES COMMISSION, AND SAID WATER COMPANY HAS AGREED IN WRITING TO SERVE ALL OF THE LOTS WITHIN THIS SUBDIVISION.

IN WITNESS WHEREOF, I have hereunto set my hand this 18th day of November 2005.

South Channel, L.L.C.

By:  
Rocky Ridge Construction Inc., Managing Member,

By: Jeff Shahr  
Jeff Shahr, President

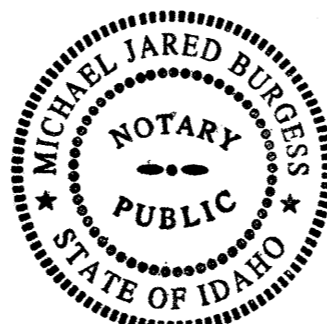


## ACKNOWLEDGMENT

STATE OF IDAHO } S.S.  
COUNTY OF ADA }

ON THIS 18th DAY OF November, 2005, BEFORE ME, THE UNDERSIGNED, A NOTARY PUBLIC IN AND FOR SAID STATE, PERSONALLY APPEARED, JEFF SHERBURNE, KNOWN OR IDENTIFIED TO ME TO BE THE PRESIDENT OF ROCKY RIDGE CONSTRUCTION INC., A CORPORATION, ONE OF THE MANAGING MEMBERS OF THE SOUTH CHANNEL, L.L.C., A LIMITED LIABILITY COMPANY, WHO SUBSCRIBED SAID LIMITED LIABILITY COMPANY'S NAME TO THE FOREGOING INSTRUMENT, AND ACKNOWLEDGED TO ME THAT HE EXECUTED THE WITHIN INSTRUMENT ON BEHALF OF SAID CORPORATION, AND THAT SUCH CORPORATION EXECUTED THE SAME IN SAID LIMITED LIABILITY COMPANY'S NAME.

IN WITNESS WHEREOF, I HAVE HEREUNTO SET MY HAND AND AFFIXED MY OFFICIAL SEAL THE DAY AND YEAR IN THIS CERTIFICATE FIRST ABOVE WRITTEN.



Michael Jared Burgess  
NOTARY PUBLIC FOR THE STATE OF IDAHO

11/18/05  
DATE

6/12/09  
MY COMMISSION EXPIRES

## NOTES

1) BUILDING SETBACK LINES SHALL BE IN ACCORDANCE WITH THE APPLICABLE ZONING AND SUBDIVISION REGULATIONS AT THE TIME OF ISSUANCE OF A BUILDING PERMIT AS SPECIFICALLY APPROVED AND/OR REQUIRED BY THE APPROPRIATE REGULATORY AGENCIES.

2) ANY RESUBDIVISION OF THIS PLAT SHALL COMPLY WITH THE APPLICABLE ZONING REGULATIONS IN EFFECT AT THE TIME OF RESUBDIVISION.

3) THIS PLAT IS SUBJECT TO COMPLIANCE WITH IDAHO CODE SECTION 31-3805. IRRIGATION WATER WILL BE DELIVERED BY THE SHORES DEVELOPMENT HOMEOWNER'S ASSOCIATION THROUGH A PRESSURE IRRIGATION SYSTEM TO ALL LOTS EXCEPT BLOCK 1, LOT 1. IRRIGATION WATER IS PROVIDED TO THIS DEVELOPMENT THROUGH SHARES IN THE MACE-CATLIN MUTUAL DITCH COMPANY IN COMBINATION WITH WATER RIGHTS APPURTENANT TO THE PROPERTY. LOTS IN THIS DEVELOPMENT ARE SUBJECT TO ASSESSMENT FOR THE MACE-CATLIN DITCH SHARES AND OPERATING COSTS FOR THE IRRIGATION SYSTEM AS ADMINISTERED BY THE SHORES HOMEOWNERS ASSOCIATION.

4) NO ENCROACHMENTS, BUILDINGS, OR OTHER STRUCTURES SHALL BE BUILT ON PORTIONS OF LOTS LYING WITHIN THE FLOODWAY PURSUANT TO CITY OF EAGLE CODE 10-1-8-5(D). NO EQUIPMENT OR VEHICLES SHALL BE STORED, OR ANY SOLID-FACE FENCES BE CONSTRUCTED, ON ANY PORTION OF THE LOTS LYING WITHIN THE FLOODWAY. NO BUILDINGS OR OTHER STRUCTURES SHALL BE BUILT WITHIN 50 FEET OF THE FEMA FLOODWAY LINE AS SHOWN ON THE CURRENT EFFECTIVE FEMA FLOODPLAIN MAPS.

5) THE 25-FOOT GREENBELT EASEMENTS SHOWN ON THIS PLAT, AND RECORDED IN INSTRUMENT NOS. 105088975 & 105088976 ARE FOR USE BY THE GENERAL PUBLIC FOR PEDESTRIAN, EQUESTRIAN AND OTHER NON-MOTORIZED ACCESS IN FAVOR OF THE CITY OF EAGLE.

6) SURROUNDING LANDS WITH FARM USE AND RELATED ACTIVITIES SHALL BE PROTECTED PURSUANT TO THE IDAHO RIGHT TO FARM ACT.

7) ALL COMMON AREA LOTS SHALL BE OWNED AND MAINTAINED BY THE SHORES HOMEOWNER'S ASSOCIATION AND SHALL BE ENCUMBERED BY A MUTUAL MAINTENANCE AND ACCESS EASEMENT BENEFITING THE HOA.

8) A PORTION OF LOTS 2, 5, 6, 7, 10, 11, 14, AND 15, BLOCK 1, PORTIONS OF LOTS 2, 3, 7, 8, 10, 11, 12, 22, AND 23, BLOCK 2, PORTIONS OF LOTS 3, 4, 7, AND 8, BLOCK 3, AND ALL OF LOT 1 OF BLOCKS 3, 6, 7, 8, 10, 12, 13, 14, 15, 17, 18, AND 19, ARE SERVIENT TO AND CONTAIN THE ACHD STORM WATER DRAINAGE SYSTEM. THESE LOTS ARE ENCUMBERED BY THAT CERTAIN MASTER PERPETUAL STORM WATER DRAINAGE EASEMENT RECORDED ON JUNE 1, 2004 AS INSTRUMENT NO. 104068411, OFFICIAL RECORDS OF ADA COUNTY, AND INCORPORATED HEREIN BY THIS REFERENCE AS IF SET FORTH IN FULL (THE "MASTER EASEMENT"). THE MASTER EASEMENT AND THE STORM WATER DRAINAGE SYSTEM ARE DEDICATED TO ACHD PURSUANT TO SECTION 40-2302, IDAHO CODE. THE MASTER EASEMENT IS FOR THE OPERATION AND MAINTENANCE OF THE STORM WATER DRAINAGE SYSTEM.

9) ALL FRONT LOT LINES CONTAIN A 15.00 FOOT WIDE EASEMENT FOR PUBLIC UTILITIES, STREET LIGHTS AND HOME OWNERS ASSOCIATION IRRIGATION AND DRAINAGE EASEMENTS. ALL REAR LOT LINES WITH THE EXCEPTION OF LOTS 1 AND 3 THROUGH 16 OF BLOCK 1 CONTAIN A 12.00 FOOT WIDE PUBLIC UTILITIES EASEMENT AND HOME OWNERS ASSOCIATION IRRIGATION AND DRAINAGE EASEMENTS. ALL COMMON SIDE LOT LINES CONTAIN A 6.00 FOOT WIDE EASEMENT FOR PUBLIC UTILITIES AND HOME OWNERS ASSOCIATION IRRIGATION AND DRAINAGE EASEMENTS.

10) LOTS WITHIN THIS SUBDIVISION CONTAIN ACCESS RESTRICTIONS. DRIVEWAYS ARE PERMITTED ONLY WHERE SIDEWALKS ARE DIRECTLY ATTACHED TO THE ROADWAY CURB. THESE LOTS INCLUDE LOTS 6, 7, 10, 11, 14, AND 15 OF BLOCK 1, LOTS 2, 3, 7, 8, 10, 11, 14, 15, 18, 19, 22, AND 23 OF BLOCK 2, LOTS 3, 4, 7, AND 8 OF BLOCK 3, AND LOTS 3, 4, 7, 10, 11, 13, 14, AND 17 OF BLOCK 4.

11) LANDSCAPING WITHIN LOTS 1 OF BLOCKS 9, 11, AND 16 SHALL BE LIMITED TO GRASS, FLOWERS, OR SHRUBS NOT EXCEEDING 3 FEET IN HEIGHT.

12) LOTS 1, 4 THROUGH 9, AND 11 THROUGH 16, BLOCK 1, AND LOT 1, BLOCK 3, CONTAIN WETLAND CONSERVATION EASEMENTS TO PROTECT EXISTING AND CREATED WETLAND AREAS. THESE AREAS ARE CONSIDERED NON-BUILDABLE AREAS AND ARE TO BE LEFT UNDISTURBED PER THE REQUIREMENTS OF THE EXISTING U.S. ARMY CORPS OF ENGINEERS PERMIT NO. NWW-042100139.

**TOOTHMAN-ORTON ENGINEERING COMPANY**

9777 CHINDEN BOULEVARD  
BOISE, IDAHO 83714  
(208) 323-2286

**SHEET NO. 8 OF 9**

# THE SHORES SUBDIVISION - PHASE 1

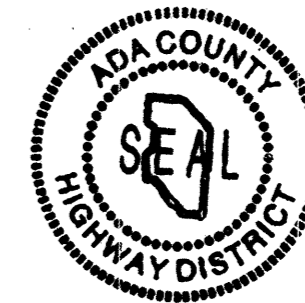
## APPROVAL OF CITY ENGINEER

I, THE UNDERSIGNED CITY ENGINEER IN AND FOR THE CITY OF EAGLE, ADA COUNTY, IDAHO, HEREBY APPROVE THIS PLAT OF "THE SHORES SUBDIVISION - PHASE 1".

*Timothy L. Glin* 12/12/05  
CITY ENGINEER - EAGLE, IDAHO

## ADA COUNTY HIGHWAY DISTRICT COMMISSIONERS ACCEPTANCE

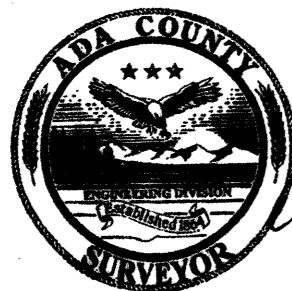
THE FOREGOING PLAT WAS ACCEPTED AND APPROVED BY THE BOARD OF ADA COUNTY HIGHWAY DISTRICT COMMISSIONERS ON THE 5<sup>TH</sup> DAY OF OCTOBER, 2005.



*John P. Smith*  
ADA COUNTY HIGHWAY DISTRICT

## CERTIFICATE OF COUNTY SURVEYOR

I, THE UNDERSIGNED, REGISTERED SURVEYOR FOR ADA COUNTY, IDAHO, DO HEREBY CERTIFY THAT I HAVE CHECKED THIS PLAT AND THAT IT COMPLIES WITH THE STATE OF IDAHO CODE RELATING TO PLATS AND SURVEYS.



*John E. Brister* 11/1/06  
ADA COUNTY SURVEYOR PEL 53030

## APPROVAL OF CITY COUNCIL

I, THE UNDERSIGNED, CITY CLERK IN AND FOR THE CITY OF EAGLE, ADA COUNTY, IDAHO, HEREBY CERTIFY THAT AT A REGULAR MEETING OF THE CITY COUNCIL HELD ON THE 13<sup>TH</sup> DAY OF SEPTEMBER 2005, THIS PLAT OF "THE SHORES SUBDIVISION - PHASE 1" WAS DULY ACCEPTED AND APPROVED.



*Sharon K. Bergman*  
CITY CLERK - EAGLE, IDAHO

## CERTIFICATE OF COUNTY TREASURER

I, THE UNDERSIGNED, COUNTY TREASURER IN AND FOR THE COUNTY OF ADA, STATE OF IDAHO, PER THE REQUIREMENTS OF I.C. 50-1308, DO HEREBY CERTIFY THAT ANY AND ALL CURRENT AND/OR DELINQUENT COUNTY PROPERTY TAXES FOR THE PROPERTY INCLUDED IN THIS SUBDIVISION HAVE BEEN PAID IN FULL. THIS CERTIFICATION IS VALID FOR THE NEXT THIRTY (30) DAYS ONLY.

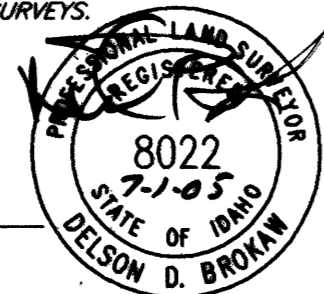
DATE 11/1/06



*Ronda Fischer* by  
COUNTY TREASURER  
*Angela Smith*, Deputy

## CERTIFICATE OF SURVEYOR

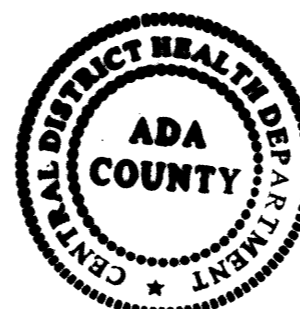
I, DELSON D. BROKAW, DO HEREBY CERTIFY THAT I AM A REGISTERED LAND SURVEYOR IN THE STATE OF IDAHO, AND THAT THIS PLAT AS DESCRIBED IN THE "CERTIFICATE OF OWNERS" WAS DRAWN FROM THE FIELD NOTES OF A SURVEY MADE ON THE GROUND UNDER MY DIRECT SUPERVISION AND ACCURATELY REPRESENTS THE POINTS PLATTED HEREON, AND IS IN CONFORMITY WITH THE STATE OF IDAHO CODE RELATING TO PLATS AND SURVEYS.



DELSON D. BROKAW  
IDAHO NO. 8022

## APPROVAL OF CENTRAL DISTRICT HEALTH DEPARTMENT

SANITARY RESTRICTIONS AS REQUIRED BY IDAHO CODE, TITLE 50, CHAPTER 13 HAVE BEEN SATISFIED BASED ON THE STATE OF IDAHO, DEPARTMENT OF ENVIRONMENTAL QUALITY (DEQ) APPROVAL OF THE DESIGN PLANS AND SPECIFICATIONS AND THE CONDITIONS IMPOSED ON THE DEVELOPER FOR CONTINUED SATISFACTION OF THE SANITARY RESTRICTIONS. BUYER IS CAUTIONED THAT AT THE TIME OF THIS APPROVAL, NO DRINKING WATER OR SEWER/SEPTIC FACILITIES WERE CONSTRUCTED. BUILDING CONSTRUCTION CAN BE ALLOWED WITH APPROPRIATE BUILDING PERMITS IF DRINKING WATER OR SEWER FACILITIES HAVE SINCE BEEN CONSTRUCTED OR IF THE DEVELOPER IS SIMULTANEOUSLY CONSTRUCTING THOSE FACILITIES. IF THE DEVELOPER FAILS TO CONSTRUCT FACILITIES OR MEET THE OTHER CONDITIONS OF DEQ, THEN SANITARY RESTRICTIONS MAY BE REIMPOSED, IN ACCORDANCE WITH SECTION 50-1326, IDAHO CODE, BY THE ISSUANCE OF A CERTIFICATE OF DISAPPROVAL, AND NO CONSTRUCTION OF ANY BUILDING OR SHELTER REQUIRING DRINKING WATER OR SEWER/SEPTIC FACILITIES SHALL BE ALLOWED.



*Melinda McVey REHS* 08-12-05  
CENTRAL DISTRICT HEALTH DEPARTMENT

## CERTIFICATE OF COUNTY RECORDER

STATE OF IDAHO } S.S.  
COUNTY OF ADA }

I HEREBY CERTIFY THAT THIS INSTRUMENT WAS FILED FOR RECORD AT THE REQUEST OF SOUTH CHANNEL LLC., AT 45 MINUTES PAST 11 O'CLOCK A.M. ON THIS 12 DAY OF JANUARY, 2006, AND WAS DULY RECORDED IN BOOK 94 OF PLATS AT PAGES 11424 THROUGH 11432.

INSTRUMENT NUMBER 101005728

*Alondra*  
DEPUTY  
FEE: \$47.00

*J. David Munn*  
EX OFFICIO RECORDER

## TOOTHMAN-ORTON ENGINEERING COMPANY

9777 CHINDEN BOULEVARD  
BOISE, IDAHO 83714  
(208) 323-2288