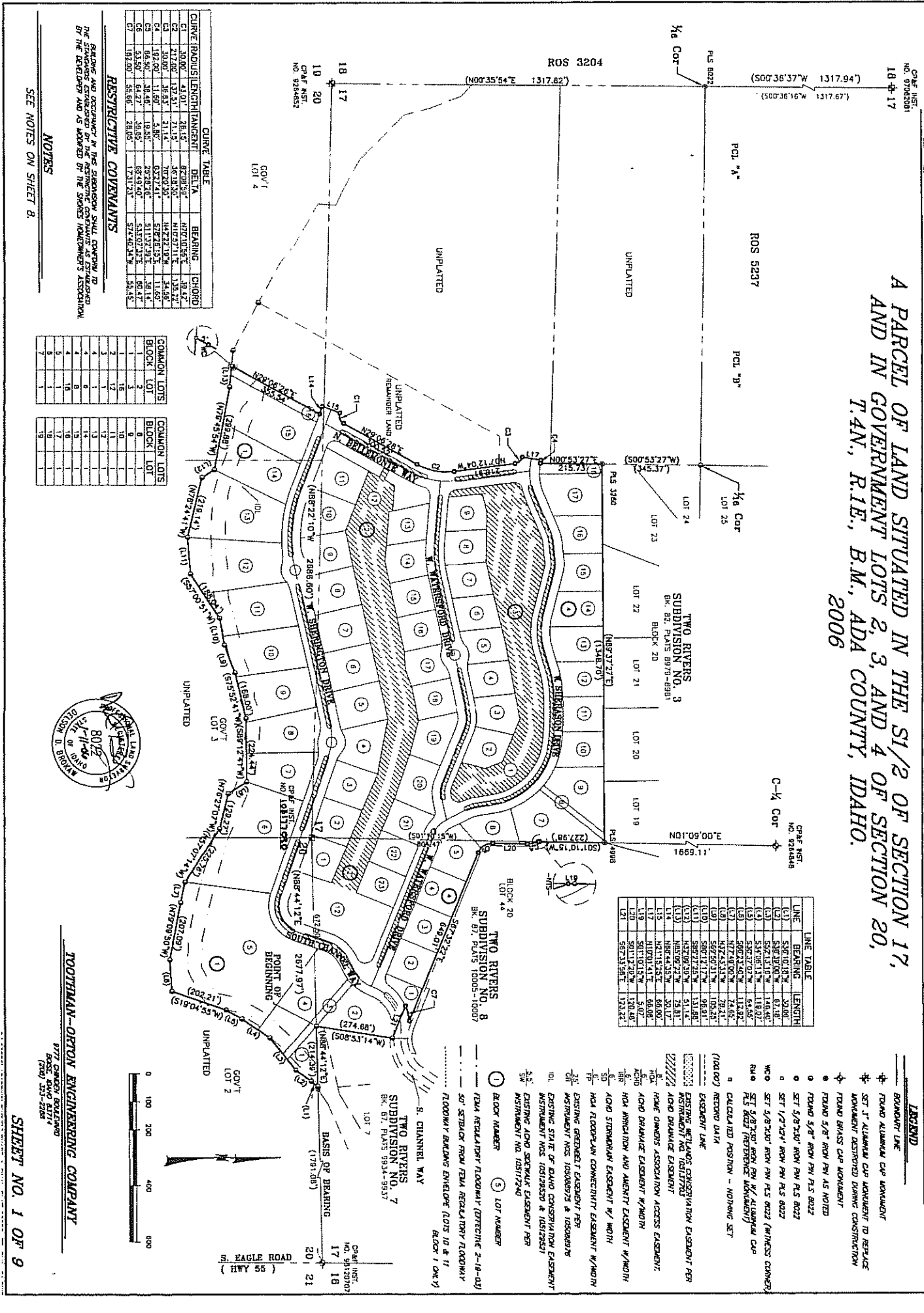


# THE SHORES SUBDIVISION - PHASE 1

EX 94 8/11/24

A PARCEL OF LAND SITUATED IN THE S1/2 OF SECTION 17, AND IN GOVERNMENT LOTS 2, 3, AND 4 OF SECTION 20, T.4N., R.1E., B.M., ADA COUNTY, IDAHO. 2006



**CURVE TABLE**

| CURVE | RADIUS  | LENGTH  | TANGENT | DELTA     | BEARING      | CHORD   |
|-------|---------|---------|---------|-----------|--------------|---------|
| C1    | 30.00'  | 4.91'   | 28.15'  | 87.28°58' | H27°10'55"E  | 30.42'  |
| C2    | 472.00' | 137.31' | 21.15'  | 36°18'30" | H107°57'11"E | 135.42' |
| C3    | 50.00'  | 38.83'  | 21.15'  | 36°18'30" | H107°57'11"E | 37.80'  |
| C4    | 174.00' | 38.48'  | 18.93'  | 28°22'26" | S112°32'32"E | 38.14'  |
| C5    | 53.50'  | 64.27'  | 28.85'  | 88°49'40" | S130°27'32"E | 80.47'  |
| C6    | 53.50'  | 64.27'  | 28.85'  | 88°49'40" | S130°27'32"E | 80.47'  |
| C7    | 182.00' | 56.66'  | 28.85'  | 17°31'23" | S74°40'34"W  | 55.45'  |

**RESTRICTIVE COVENANTS**

BEARING AND OCCUPANCY IN THIS SUBDIVISION SHALL COMPLY TO THE STANDARDS ESTABLISHED BY THE ARCHITECTURAL COMMITTEE AS ESTABLISHED BY THE DEVELOPER AND AS ADOPTED BY THE SHORES HOMEOWNERS ASSOCIATION.

**NOTES**

SEE NOTES ON SHEET B.

| COMMON LOTS | COMMON LOTS |
|-------------|-------------|
| 1           | 1           |
| 2           | 2           |
| 3           | 3           |
| 4           | 4           |
| 5           | 5           |
| 6           | 6           |
| 7           | 7           |
| 8           | 8           |
| 9           | 9           |
| 10          | 10          |
| 11          | 11          |
| 12          | 12          |
| 13          | 13          |
| 14          | 14          |
| 15          | 15          |
| 16          | 16          |
| 17          | 17          |
| 18          | 18          |
| 19          | 19          |
| 20          | 20          |
| 21          | 21          |
| 22          | 22          |
| 23          | 23          |
| 24          | 24          |
| 25          | 25          |

**LINE TABLE**

| LINE | BEARING     | LENGTH  |
|------|-------------|---------|
| (1)  | S87°07'11"W | 30.42'  |
| (2)  | S87°30'00"W | 61.18'  |
| (3)  | S87°31'16"W | 146.40' |
| (4)  | S31°08'11"W | 118.87' |
| (5)  | S32°37'07"W | 94.85'  |
| (6)  | S89°23'20"W | 113.42' |
| (7)  | N72°43'11"W | 78.51'  |
| (8)  | S67°50'31"W | 105.51' |
| (9)  | S87°21'17"W | 98.81'  |
| (10) | N82°06'22"W | 75.91'  |
| (11) | N82°06'22"W | 75.91'  |
| (12) | N10°10'15"W | 60.08'  |
| (13) | S01°12'20"W | 5.07'   |
| (14) | S01°12'20"W | 120.48' |
| (15) | S87°33'58"E | 173.22' |



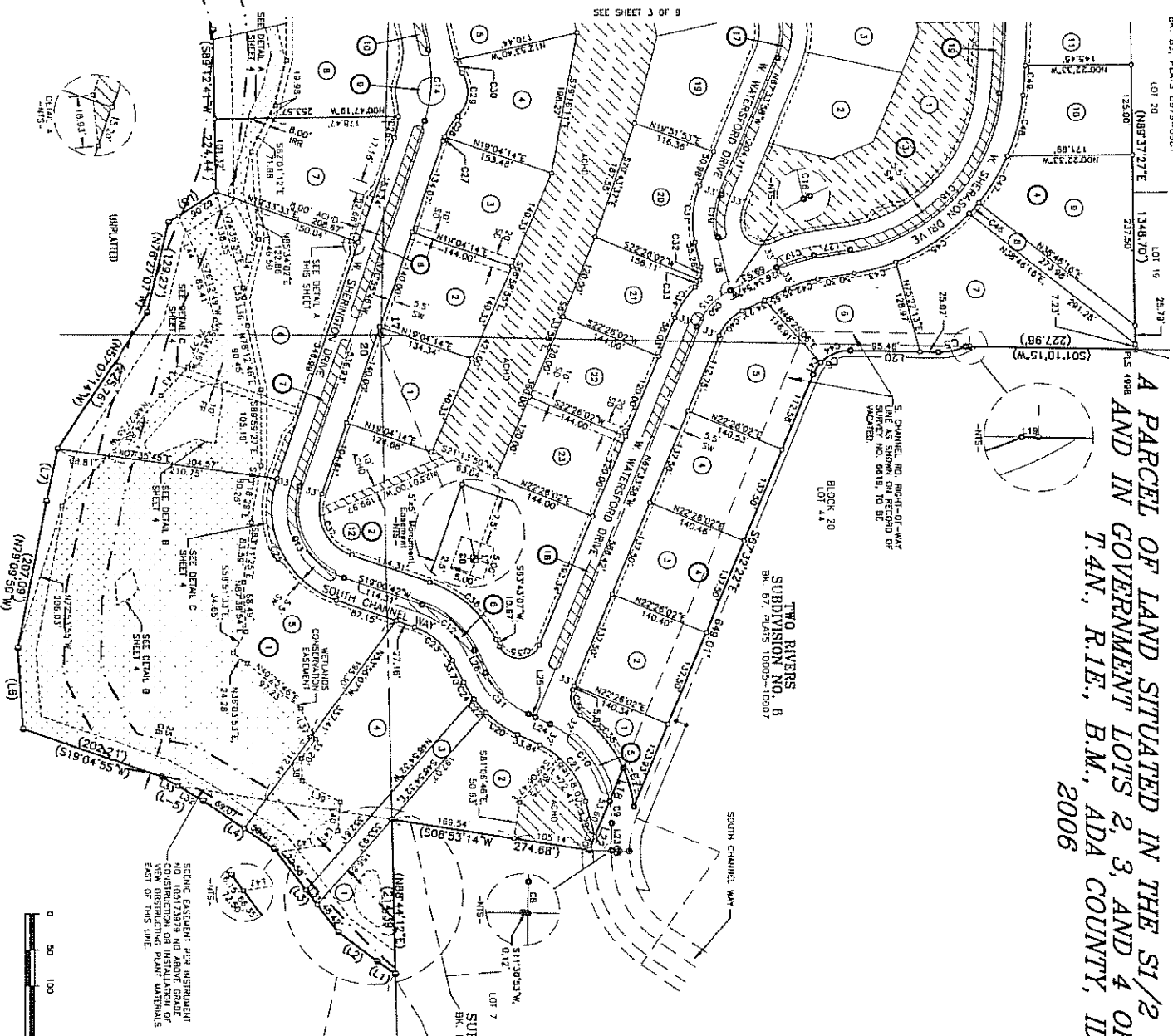
**TOOTMAN-OPTON ENGINEERING COMPANY**  
 7777 CARMON BOULEVARD  
 BOISE, IDAHO 83717  
 (208) 333-2288

SHEET NO. 1 OF 9

Alphabetical Subdivision Plats - BK94 Pg11424 SHORES SUB THE, Scale: 1 inch = 2.22 Inches

# THE SHORES SUBDIVISION - PHASE 1

A PARCEL OF LAND SITUATED IN THE S1/2 OF SECTION 17,  
AND IN GOVERNMENT LOTS 2, 3, AND 4 OF SECTION 20,  
T.4N., R.1E., B.M., ADA COUNTY, IDAHO.  
2006

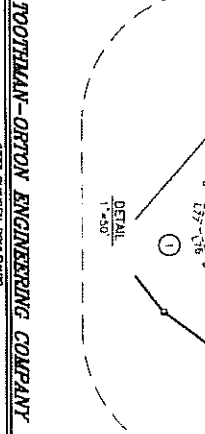
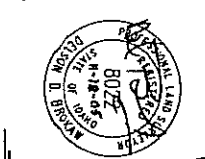


**LINE TABLE**

| LINE | BEARING    | LENGTH | CHORD  |
|------|------------|--------|--------|
| L1   | S89°01'8\" | 78.06' | 78.06' |
| L2   | S89°01'8\" | 78.06' | 78.06' |
| L3   | S89°01'8\" | 78.06' | 78.06' |
| L4   | S89°01'8\" | 78.06' | 78.06' |
| L5   | S89°01'8\" | 78.06' | 78.06' |
| L6   | S89°01'8\" | 78.06' | 78.06' |
| L7   | S89°01'8\" | 78.06' | 78.06' |
| L8   | S89°01'8\" | 78.06' | 78.06' |
| L9   | S89°01'8\" | 78.06' | 78.06' |
| L10  | S89°01'8\" | 78.06' | 78.06' |
| L11  | S89°01'8\" | 78.06' | 78.06' |
| L12  | S89°01'8\" | 78.06' | 78.06' |
| L13  | S89°01'8\" | 78.06' | 78.06' |
| L14  | S89°01'8\" | 78.06' | 78.06' |
| L15  | S89°01'8\" | 78.06' | 78.06' |
| L16  | S89°01'8\" | 78.06' | 78.06' |
| L17  | S89°01'8\" | 78.06' | 78.06' |
| L18  | S89°01'8\" | 78.06' | 78.06' |
| L19  | S89°01'8\" | 78.06' | 78.06' |
| L20  | S89°01'8\" | 78.06' | 78.06' |
| L21  | S89°01'8\" | 78.06' | 78.06' |

**CURVE TABLE**

| CURVE | RADIUS  | LENGTH | ANGENT | DELTA   | CHORD   |
|-------|---------|--------|--------|---------|---------|
| C1    | 66.60'  | 18.46' | 18.45' | 28.28'  | 38.14'  |
| C2    | 53.50'  | 14.27' | 14.27' | 21.71'  | 29.47'  |
| C3    | 182.00' | 55.66' | 26.05' | 173.14' | 169.17' |
| C4    | 150.00' | 47.21' | 23.88' | 150.00' | 147.21' |
| C5    | 150.00' | 47.21' | 23.88' | 150.00' | 147.21' |
| C6    | 150.00' | 47.21' | 23.88' | 150.00' | 147.21' |
| C7    | 150.00' | 47.21' | 23.88' | 150.00' | 147.21' |
| C8    | 150.00' | 47.21' | 23.88' | 150.00' | 147.21' |
| C9    | 150.00' | 47.21' | 23.88' | 150.00' | 147.21' |
| C10   | 150.00' | 47.21' | 23.88' | 150.00' | 147.21' |
| C11   | 150.00' | 47.21' | 23.88' | 150.00' | 147.21' |
| C12   | 150.00' | 47.21' | 23.88' | 150.00' | 147.21' |
| C13   | 150.00' | 47.21' | 23.88' | 150.00' | 147.21' |
| C14   | 150.00' | 47.21' | 23.88' | 150.00' | 147.21' |
| C15   | 150.00' | 47.21' | 23.88' | 150.00' | 147.21' |
| C16   | 150.00' | 47.21' | 23.88' | 150.00' | 147.21' |
| C17   | 150.00' | 47.21' | 23.88' | 150.00' | 147.21' |
| C18   | 150.00' | 47.21' | 23.88' | 150.00' | 147.21' |
| C19   | 150.00' | 47.21' | 23.88' | 150.00' | 147.21' |
| C20   | 150.00' | 47.21' | 23.88' | 150.00' | 147.21' |
| C21   | 150.00' | 47.21' | 23.88' | 150.00' | 147.21' |
| C22   | 150.00' | 47.21' | 23.88' | 150.00' | 147.21' |
| C23   | 150.00' | 47.21' | 23.88' | 150.00' | 147.21' |
| C24   | 150.00' | 47.21' | 23.88' | 150.00' | 147.21' |
| C25   | 150.00' | 47.21' | 23.88' | 150.00' | 147.21' |
| C26   | 150.00' | 47.21' | 23.88' | 150.00' | 147.21' |
| C27   | 150.00' | 47.21' | 23.88' | 150.00' | 147.21' |
| C28   | 150.00' | 47.21' | 23.88' | 150.00' | 147.21' |
| C29   | 150.00' | 47.21' | 23.88' | 150.00' | 147.21' |
| C30   | 150.00' | 47.21' | 23.88' | 150.00' | 147.21' |



Alphabetical Subdivision Plats - Bk94 Pg11425 SHORES SUB THE PG 2, Scale: 1 inch = 2.22 Inches

TOOTHMAN-ORTON ENGINEERING COMPANY  
3777 SHERIDAN BOULEVARD  
BOISE, IDAHO 83719  
(208) 333-2888

# THE SHORES SUBDIVISION - PHASE 1

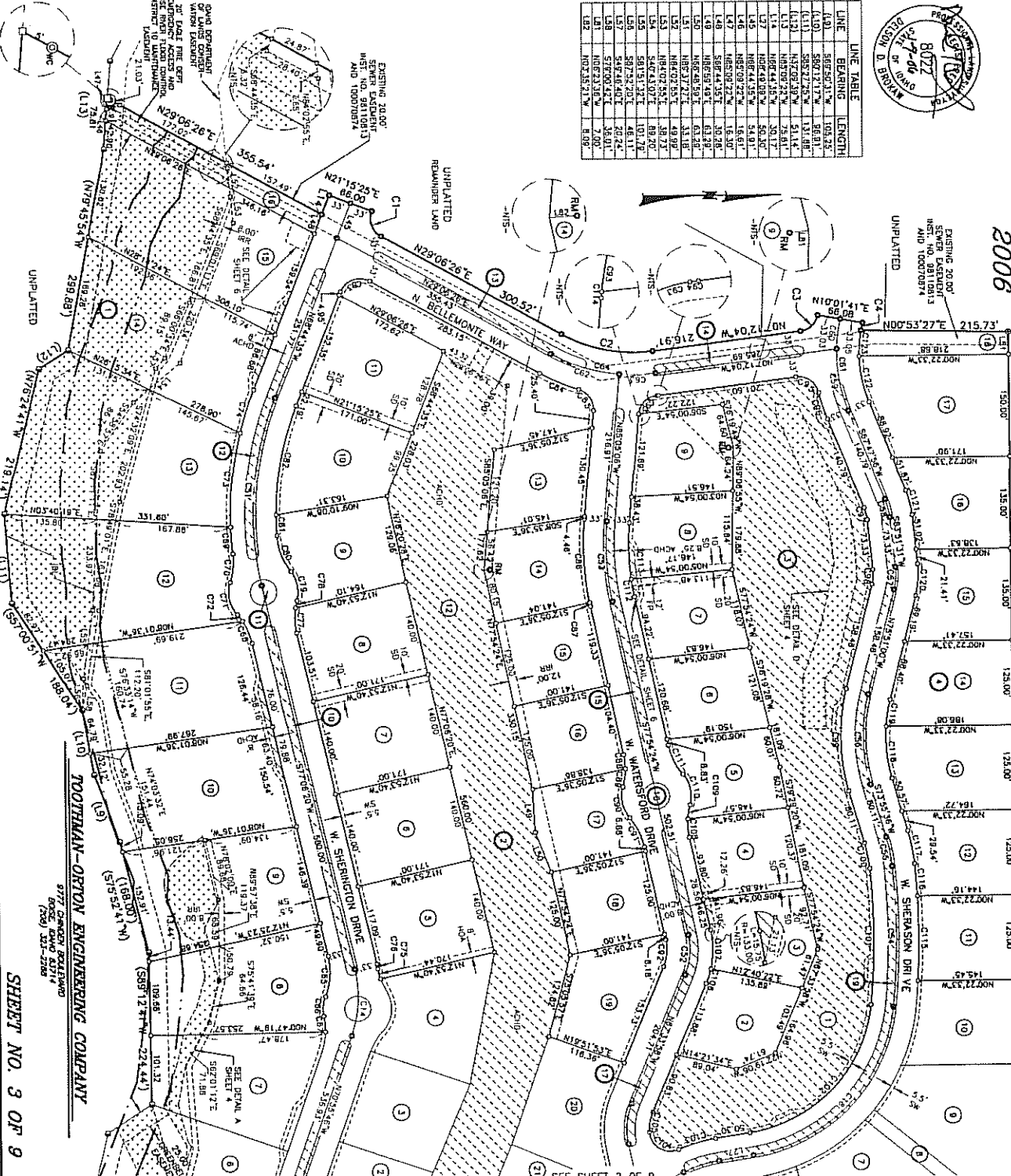
A PARCEL OF LAND SITUATED IN THE S1/2 OF SECTION 17,  
AND IN GOVERNMENT LOTS 2, 3, AND 4 OF SECTION 20,  
T.4N., R.1E., B.M., ADA COUNTY, IDAHO,  
2006

TWO RIVERS  
SUBDIVISION NO. 3  
BK. 82, PAGES 5979-5981

| CURVE | RADIUS  | LENGTH  | TANGENT | DELTA      | BEARING      | CHORD   |
|-------|---------|---------|---------|------------|--------------|---------|
| C1    | 30.00'  | 4.60'   | 26.18'  | 92.68°58'  | N101°31'12"E | 1.8671' |
| C2    | 217.00' | 137.51' | 211.55' | 92°58'58"  | N122°21'10"E | 134.68' |
| C3    | 182.00' | 136.00' | 51.99'  | 92°22'41"  | S72°23'43"E  | 11.60'  |
| C4    | 180.00' | 100.42' | 51.99'  | 11°57'54"  | S11°57'54"E  | 99.17'  |
| C5    | 245.00' | 321.29' | 188.99' | 75°16'47"  | N65°23'02"E  | 239.24' |
| C6    | 471.00' | 289.72' | 144.68' | 34°09'05"  | N65°23'02"E  | 228.61' |
| C7    | 100.00' | 10.00'  | 10.00'  | 180°00'00" | N180°00'00"E | 10.00'  |
| C8    | 100.00' | 10.00'  | 10.00'  | 180°00'00" | N180°00'00"E | 10.00'  |
| C9    | 100.00' | 10.00'  | 10.00'  | 180°00'00" | N180°00'00"E | 10.00'  |
| C10   | 100.00' | 10.00'  | 10.00'  | 180°00'00" | N180°00'00"E | 10.00'  |
| C11   | 100.00' | 10.00'  | 10.00'  | 180°00'00" | N180°00'00"E | 10.00'  |
| C12   | 100.00' | 10.00'  | 10.00'  | 180°00'00" | N180°00'00"E | 10.00'  |
| C13   | 100.00' | 10.00'  | 10.00'  | 180°00'00" | N180°00'00"E | 10.00'  |
| C14   | 100.00' | 10.00'  | 10.00'  | 180°00'00" | N180°00'00"E | 10.00'  |
| C15   | 100.00' | 10.00'  | 10.00'  | 180°00'00" | N180°00'00"E | 10.00'  |
| C16   | 100.00' | 10.00'  | 10.00'  | 180°00'00" | N180°00'00"E | 10.00'  |
| C17   | 100.00' | 10.00'  | 10.00'  | 180°00'00" | N180°00'00"E | 10.00'  |
| C18   | 100.00' | 10.00'  | 10.00'  | 180°00'00" | N180°00'00"E | 10.00'  |
| C19   | 100.00' | 10.00'  | 10.00'  | 180°00'00" | N180°00'00"E | 10.00'  |
| C20   | 100.00' | 10.00'  | 10.00'  | 180°00'00" | N180°00'00"E | 10.00'  |
| C21   | 100.00' | 10.00'  | 10.00'  | 180°00'00" | N180°00'00"E | 10.00'  |
| C22   | 100.00' | 10.00'  | 10.00'  | 180°00'00" | N180°00'00"E | 10.00'  |
| C23   | 100.00' | 10.00'  | 10.00'  | 180°00'00" | N180°00'00"E | 10.00'  |



| LINE | BEARING     | LENGTH  |
|------|-------------|---------|
| L1   | S89°56'31"W | 105.45' |
| L2   | S89°56'31"W | 105.45' |
| L3   | S89°56'31"W | 105.45' |
| L4   | S89°56'31"W | 105.45' |
| L5   | S89°56'31"W | 105.45' |
| L6   | S89°56'31"W | 105.45' |
| L7   | S89°56'31"W | 105.45' |
| L8   | S89°56'31"W | 105.45' |
| L9   | S89°56'31"W | 105.45' |
| L10  | S89°56'31"W | 105.45' |
| L11  | S89°56'31"W | 105.45' |
| L12  | S89°56'31"W | 105.45' |
| L13  | S89°56'31"W | 105.45' |
| L14  | S89°56'31"W | 105.45' |
| L15  | S89°56'31"W | 105.45' |
| L16  | S89°56'31"W | 105.45' |
| L17  | S89°56'31"W | 105.45' |
| L18  | S89°56'31"W | 105.45' |
| L19  | S89°56'31"W | 105.45' |
| L20  | S89°56'31"W | 105.45' |
| L21  | S89°56'31"W | 105.45' |
| L22  | S89°56'31"W | 105.45' |
| L23  | S89°56'31"W | 105.45' |
| L24  | S89°56'31"W | 105.45' |
| L25  | S89°56'31"W | 105.45' |
| L26  | S89°56'31"W | 105.45' |
| L27  | S89°56'31"W | 105.45' |
| L28  | S89°56'31"W | 105.45' |
| L29  | S89°56'31"W | 105.45' |
| L30  | S89°56'31"W | 105.45' |
| L31  | S89°56'31"W | 105.45' |
| L32  | S89°56'31"W | 105.45' |
| L33  | S89°56'31"W | 105.45' |
| L34  | S89°56'31"W | 105.45' |
| L35  | S89°56'31"W | 105.45' |
| L36  | S89°56'31"W | 105.45' |
| L37  | S89°56'31"W | 105.45' |
| L38  | S89°56'31"W | 105.45' |
| L39  | S89°56'31"W | 105.45' |
| L40  | S89°56'31"W | 105.45' |
| L41  | S89°56'31"W | 105.45' |
| L42  | S89°56'31"W | 105.45' |
| L43  | S89°56'31"W | 105.45' |
| L44  | S89°56'31"W | 105.45' |
| L45  | S89°56'31"W | 105.45' |
| L46  | S89°56'31"W | 105.45' |
| L47  | S89°56'31"W | 105.45' |
| L48  | S89°56'31"W | 105.45' |
| L49  | S89°56'31"W | 105.45' |
| L50  | S89°56'31"W | 105.45' |
| L51  | S89°56'31"W | 105.45' |
| L52  | S89°56'31"W | 105.45' |
| L53  | S89°56'31"W | 105.45' |
| L54  | S89°56'31"W | 105.45' |
| L55  | S89°56'31"W | 105.45' |
| L56  | S89°56'31"W | 105.45' |
| L57  | S89°56'31"W | 105.45' |
| L58  | S89°56'31"W | 105.45' |
| L59  | S89°56'31"W | 105.45' |
| L60  | S89°56'31"W | 105.45' |
| L61  | S89°56'31"W | 105.45' |
| L62  | S89°56'31"W | 105.45' |
| L63  | S89°56'31"W | 105.45' |
| L64  | S89°56'31"W | 105.45' |
| L65  | S89°56'31"W | 105.45' |
| L66  | S89°56'31"W | 105.45' |
| L67  | S89°56'31"W | 105.45' |
| L68  | S89°56'31"W | 105.45' |
| L69  | S89°56'31"W | 105.45' |
| L70  | S89°56'31"W | 105.45' |
| L71  | S89°56'31"W | 105.45' |
| L72  | S89°56'31"W | 105.45' |
| L73  | S89°56'31"W | 105.45' |
| L74  | S89°56'31"W | 105.45' |
| L75  | S89°56'31"W | 105.45' |
| L76  | S89°56'31"W | 105.45' |
| L77  | S89°56'31"W | 105.45' |
| L78  | S89°56'31"W | 105.45' |
| L79  | S89°56'31"W | 105.45' |
| L80  | S89°56'31"W | 105.45' |
| L81  | S89°56'31"W | 105.45' |
| L82  | S89°56'31"W | 105.45' |
| L83  | S89°56'31"W | 105.45' |
| L84  | S89°56'31"W | 105.45' |
| L85  | S89°56'31"W | 105.45' |
| L86  | S89°56'31"W | 105.45' |
| L87  | S89°56'31"W | 105.45' |
| L88  | S89°56'31"W | 105.45' |
| L89  | S89°56'31"W | 105.45' |
| L90  | S89°56'31"W | 105.45' |
| L91  | S89°56'31"W | 105.45' |
| L92  | S89°56'31"W | 105.45' |
| L93  | S89°56'31"W | 105.45' |
| L94  | S89°56'31"W | 105.45' |
| L95  | S89°56'31"W | 105.45' |
| L96  | S89°56'31"W | 105.45' |
| L97  | S89°56'31"W | 105.45' |
| L98  | S89°56'31"W | 105.45' |
| L99  | S89°56'31"W | 105.45' |
| L100 | S89°56'31"W | 105.45' |



Alphabetical Subdivision Plats - BK94 Pg11426 SHORES SUB THE PG 3, Scale: 1 inch = 2.21 Inches

SHEET NO. 3 OF 9

TOOTHMAN-ORTON ENGINEERING COMPANY  
9777 CANBY BUILDING  
602 E. BOND ST. #114  
BOISE, IDAHO 83714  
(208) 333-2288