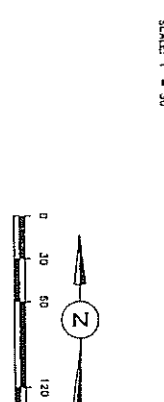
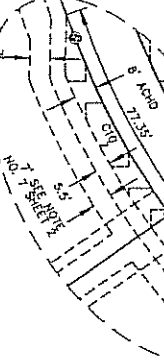
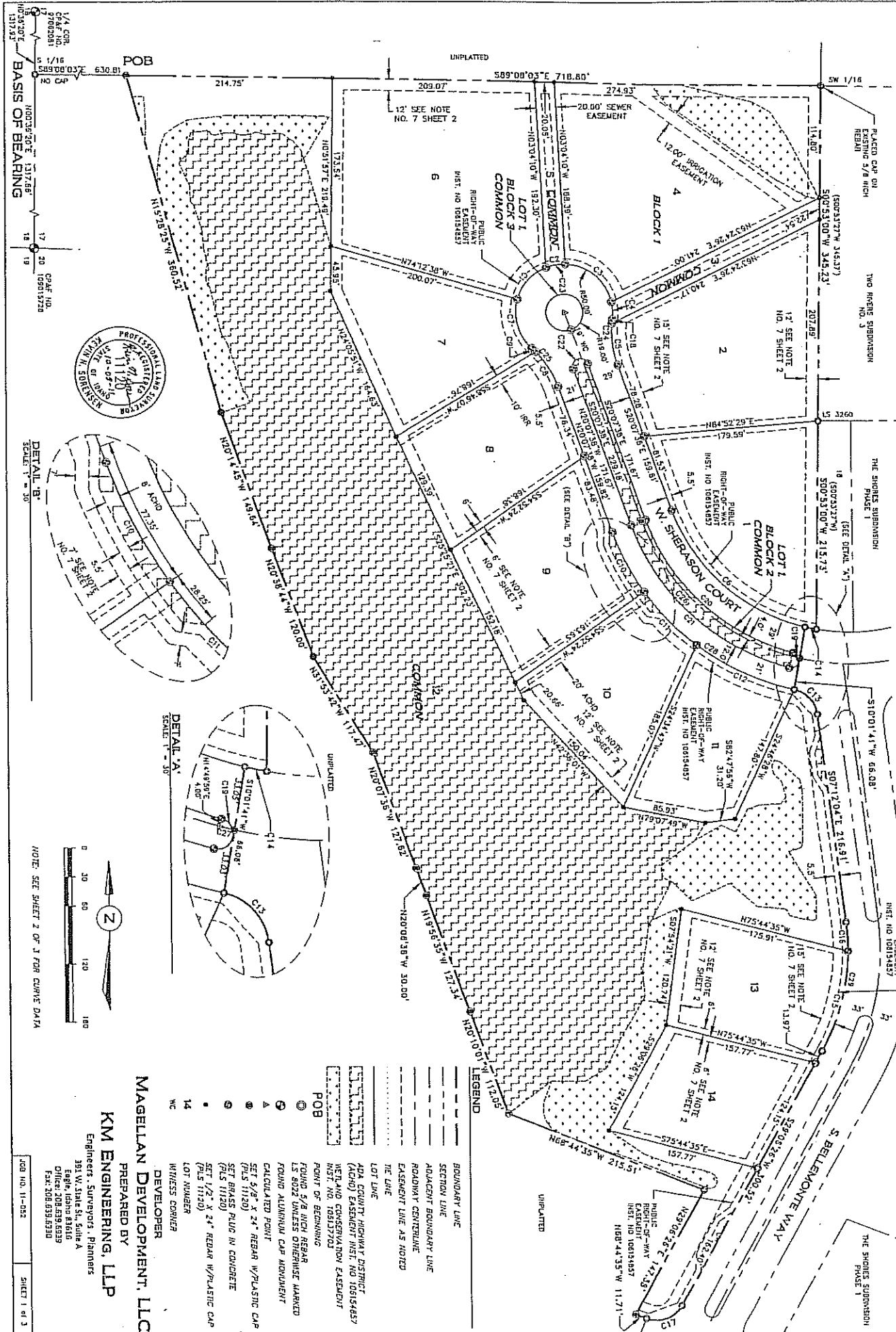


**PLAT OF
WATERS EDGE SUBDIVISION**
A PARCEL OF LAND SITUATED IN THE SIZE OF THE SIZE OF SECTION 12,
TOWNSHIP 4 NORTH, RANGE 1 EAST, BOISE MERIDIAN, CITY OF EAGLE,
ADA COUNTY, IDAHO.
2011



NOTE: SEE SHEET 2 OF 3 FOR CURVE DATA

LEGEND

- BOUNDARY LINE
- SECTION LINE
- ADJACENT BOUNDARY LINE
- ROADWAY CENTRAL LINE
- EASEMENT LINE AS NOTED
- THE LINE
- LOT LINE

POB

- ADA COUNTY HIGHWAY DISTRICT
- ADA COUNTY HIGHWAY DISTRICT (ACHD) EASEMENT INST. NO. 106194857
- NEPLAND CONSERVATION EASEMENT INST. NO. 106137201
- POINT OF BEGINNING
- ROUND 5/8" HIGH REBAR UNLESS OTHERWISE MARKED
- ROUND ALUMINUM CAP MONUMENT
- CALCULATED POINT
- SET 5/8" X 24" REBAR W/PLASTIC CAP (PLS 11120)
- SET BRASS PLUG IN CONCRETE (PLS 11120)
- SET 1/2" X 24" REDBAR W/PLASTIC CAP (PLS 11120)
- LOT NUMBER
- WITNESS CORNER

DEVELOPER
MAGELLAN DEVELOPMENT, LLC

PREPARED BY
KM ENGINEERING, LLP

Engineers - Surveyors - Planners
391 W. State St., Suite A
Eagle, Idaho 83616
Office: 208.639.6539
Fax: 208.639.6530

PLAT OF
WATERS EDGE SUBDIVISION

APPROVAL OF CITY ENGINEER
I, THE UNDERSIGNED, CITY ENGINEER IN AND FOR THE CITY OF EAGLE, ADA COUNTY, IDAHO, DO HEREBY CERTIFY THAT I HAVE CHECKED THIS FINAL PLAT AND THAT THE EAGLE CITY RECORDS SECTION RECORDING THIS PLAT HAS BEEN SET.

[Signature]
EAGLE CITY ENGINEER
10-11-2011

APPROVAL OF CITY COUNCIL
I, THE UNDERSIGNED, CITY CLERK IN AND FOR CITY OF EAGLE, ADA COUNTY, IDAHO, DO HEREBY CERTIFY THAT AT A REGULAR MEETING OF THE CITY COUNCIL, HELD ON THE 11TH DAY OF NOV 2011, THIS FINAL PLAT WAS APPROVED AND ACCEPTED.



[Signature]
CITY CLERK
EAGLE, IDAHO

ADA COUNTY HIGHWAY DISTRICT COMMISSIONERS
THE FOREGOING PLAT WAS ACCEPTED AND APPROVED BY THE BOARD OF ADA COUNTY HIGHWAY DISTRICT COMMISSIONERS ON THE 22ND DAY OF NOVEMBER 2011.



[Signature]
CHAIRMAN
ADA COUNTY HIGHWAY DISTRICT

CERTIFICATE OF COUNTY SURVEYOR
I, THE UNDERSIGNED, COUNTY SURVEYOR IN AND FOR ADA COUNTY, IDAHO, DO HEREBY CERTIFY THAT I HAVE CHECKED THIS PLAT AND THAT IT COMPLETS WITH THE STATE OF IDAHO CODE RELATING TO PLATS AND SURVEYS.



[Signature]
ADA COUNTY SURVEYOR
DATE: 10-7-2011
PLS 5357

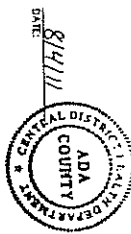
CERTIFICATE OF SURVEYOR
I, KEVIN N. SORREGEN, DO HEREBY CERTIFY THAT I AM A LAND SURVEYOR LICENSED BY THE STATE OF IDAHO, AND THAT THIS PLAT OF WATERS EDGE SUBDIVISION AS DESCRIBED IN THE CERTIFICATE OF OWNERS, AND AS SHOWN ON THE ATTACHED DIVISIONS, IS ACCURATELY REPRESENTS THE POINTS PLATTED THEREON, AND IS IN CONFORMANCE WITH THE STATE OF IDAHO CODE RELATING TO PLATS AND SURVEYS.



KEVIN N. SORREGEN, PLS 11126

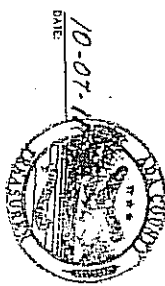
HEALTH CERTIFICATE
SANITARY RESTRICTIONS AS REQUIRED BY IDAHO CODE, TITLE 50, CHAPTER 13 HAVE BEEN SATISFIED ACCORDING TO THE LETTER TO BE RECORDED. SANITARY RESTRICTIONS MAY BE RECORDED IN ACCORDANCE WITH SECTION 50-1326, IDAHO CODE, BY THE ISSUANCE OF A CERTIFICATE OF DISAPPROVAL.

[Signature]
HEALTH OFFICER



CERTIFICATE OF THE COUNTY TREASURER
I, THE UNDERSIGNED, COUNTY TREASURER IN AND FOR THE COUNTY OF ADA, STATE OF IDAHO, DO HEREBY CERTIFY THAT ANY AND ALL CURRENT AND PENDING COUNTY PROPERTY TAXES FOR THE PROPERTY DESCRIBED AND ALL CURRENT SURVEYOR FEE HAVE BEEN PAID IN FULL. THIS CONTRIBUTION IS VALID FOR THE NEXT THIRTY (30) DAYS ONLY.

[Signature]
COUNTY TREASURER



CERTIFICATE OF COUNTY RECORDER

STATE OF IDAHO } 55
ADA COUNTY }
I HEREBY CERTIFY THAT THIS PLAT OF WATERS EDGE SUBDIVISION WAS FILED AT THE OFFICE OF KM ENGINEERING AT 2:28 MINUTES PART 1, O'CLOCK P.M., THIS 12 DAY OF OCT 2011 A.D. IN MY OFFICE AND WAS ONLY RECORDED AS BOOK 104 OF PLATS AT PAGE 1405 THRU 1407.
INSTRUMENT NUMBER 11082651

[Signature]
REC'D \$16.00

[Signature]
EX-OFFICIO RECORDER

PREPARED BY
KM ENGINEERING, LLP
Engineers, Surveyors, Planners
391 W. STATE ST., SUITE A
EAGLE, IDAHO 82403
PHONE: 208-838-8800
FAX: 208-838-8930